

# Robroy Stainless™ Catalog

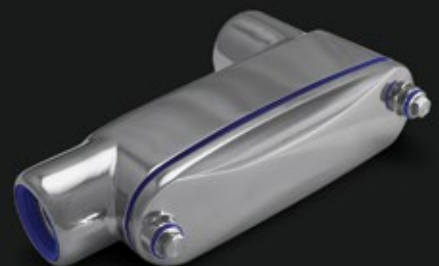
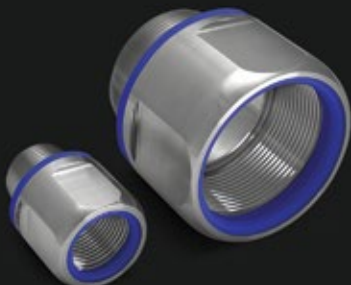
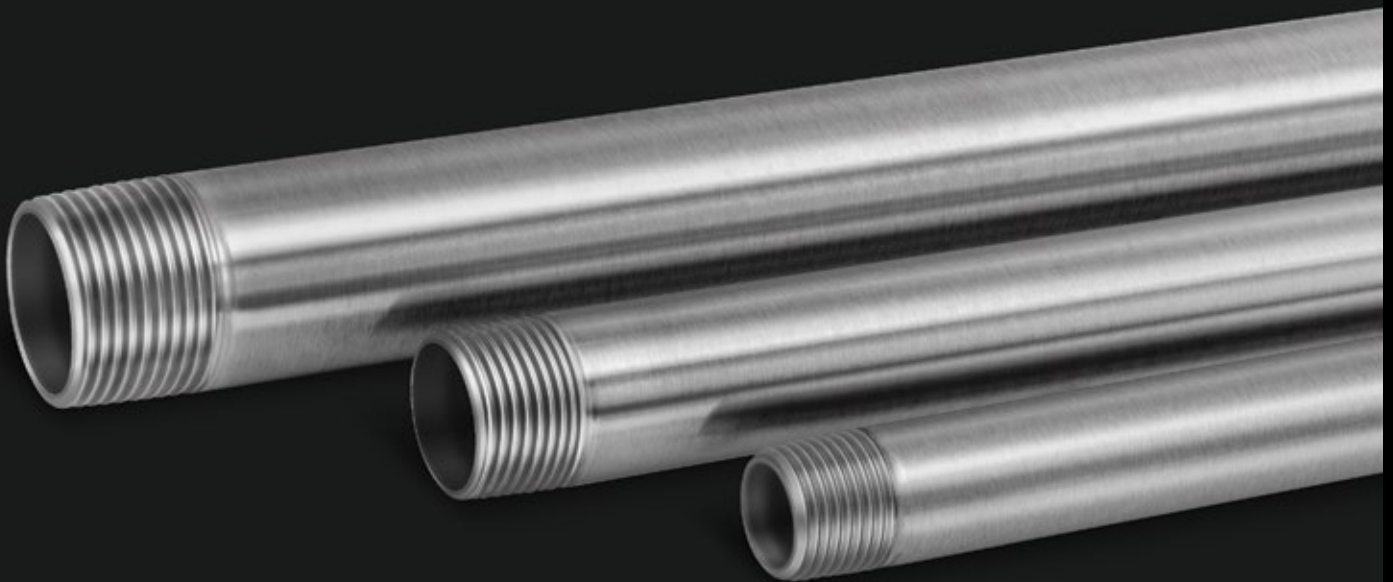
RS-102



**ROBROY**  
**STAINLESS®**  
A ROBROY Brand

## Conduit, Fittings & Accessories

A system of products built to increase reliability.



### **STATEMENT OF ACCURACY**

The information published in this catalog and other literature has been compiled with great care and is sufficiently accurate for most purposes but is not guaranteed. The product information in this catalog, though current at the catalog printing, is subject to improvements and modifications. All statements, technical information and recommendations contained herein are based on information and tests we believe to be reliable. This catalog and the products contained within is subject to change without notice. The purchaser should determine the suitability of the product for his or her application and assumes all risk and liability whatsoever in connection therewith.

Robroy products are covered by issued patents and additional patents may be pending.

Robroy Industries values and protects its intellectual property.

For more information please visit: **[RobroyStainless.com/Patents](http://RobroyStainless.com/Patents)**

Please visit **[RobroyStainless.com](http://RobroyStainless.com)** for additional product offerings.

# Table of Contents

Reliability Without Compromise	2	Basket Drains	56
Hygiene Reimagined	4	Low Point Drains	56
Conduit	10	One Hole Straps	57
Couplings	12	Two Hole Straps	57
Nipples	14	Right Angle Clamps	58
Close Nipples	19	Parallel Clamps	58
Elbows	20	Conduit Hangers	59
Conduit Bodies and Covers	22	Clamp Back Spacers	59
Conduit Hubs	34	Locknuts	60
Device Boxes	36	Beam Clamps	61
Device Box Covers	38	All Thread Rods	61
3 Piece Couplings	39	Back to Back Slotted Struts	62
Reducing Bushings	40	Slotted Struts	62
Liquid Tight Fittings	42	Rigid Strut Straps	63
Liquid Tight Transition Adapters	46	Strut Nut with Springs	63
LT Flexible Metallic Conduit - Galvanized Core	48	Brackets	64
LT Flexible Metallic Conduit - Stainless Core	49	Flat Angles	64
Cord Grips	50	Base Plates	65
Drain Plugs	54	Flat Plates	65
Hygienic Plugs	55	Flat Square Washers	66

# Reliability Without Compromise



Conceived from a spirit of innovation, Robroy Stainless debuts a new level of reliability to raceway protection, fighting against corrosion without compromise. Robroy Stainless conduit, fittings and support products are engineered with unique features conventionally missed by the marketplace. Robroy Stainless Traditional line offers noticeable design improvements to complement the natural stainless steel protection properties. Our Hygienic product line fills the void in the industry with hygienic ingenuity that rises to meet the challenges of FDA and USDA compliance. Robroy Stainless Hygienic raceway products reflect our commitment to equip end users, engineers and contractors alike with excellence in safety and withstand the rigorous demands of such standards.

## Who Can Benefit From Choosing Robroy Stainless

As owners, specifiers and contractors of a facility, your considerations are stretched beyond the core operational concerns, including raceway and support products. What products are appropriate for my environment? Are the products installed correctly for safety? For sanitation? Performance? Reliability? Are there third-party standards that can help keep my facility from compromising on electrical or food safety? Introducing Robroy Stainless, the comprehensive stainless steel platform engineered for reliability and performance without compromise.



### Owners/End Users

are concerned with TCO (Total Cost of Ownership) and lowering food safety risks. Robroy Stainless offers the perfect hygienic solution for reliability and corrosion protection.



### Engineers/Specifiers

can identify Robroy Stainless' raceway system with confidence in its quality protection against long-term corrosion damage, sanitary design and third-party certifications.

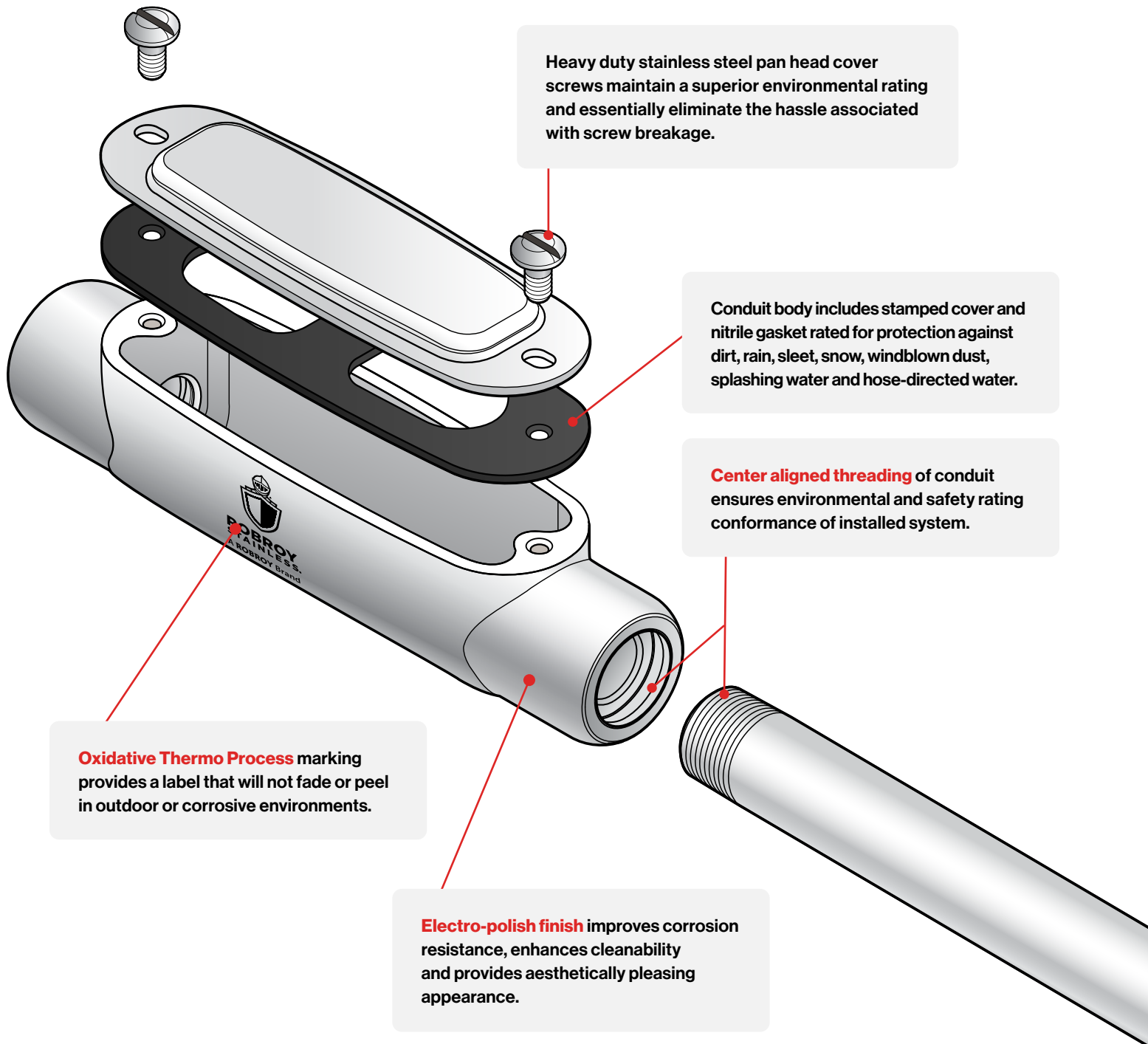


### Contractors/Installers

can minimize labor costs and increase time savings on their job site with a system for your specific application.



# Redefining Stainless Innovation



Heavy duty stainless steel pan head cover screws maintain a superior environmental rating and essentially eliminate the hassle associated with screw breakage.

Conduit body includes stamped cover and nitrile gasket rated for protection against dirt, rain, sleet, snow, windblown dust, splashing water and hose-directed water.

**Center aligned threading** of conduit ensures environmental and safety rating conformance of installed system.

**Oxidative Thermo Process** marking provides a label that will not fade or peel in outdoor or corrosive environments.

**Electro-polish finish** improves corrosion resistance, enhances cleanability and provides aesthetically pleasing appearance.

# Hygiene Reimagined

## Robroy Stainless Hygienic Conduit Body

Electrical products and infrastructure in FDA and USDA regulated facilities such as food and beverage, dairy, or pharmaceutical production areas pose a potentially high risk of contamination (biological, chemical and foreign matter) that can impact your business, your employees, your customers and even your reputation. Equally damaging is the threat of corrosion, exposing your system to dangerous and costly damage that could cut its life cycle short and require premature replacement. Having the right hygienic products in the right product zones can mitigate contamination risks while reliably protecting against corrosion. Robroy Stainless' innovative Hygienic product line is the smart solution for safety, strengthening operations, increasing cleanability and improving reliability and sanitation.



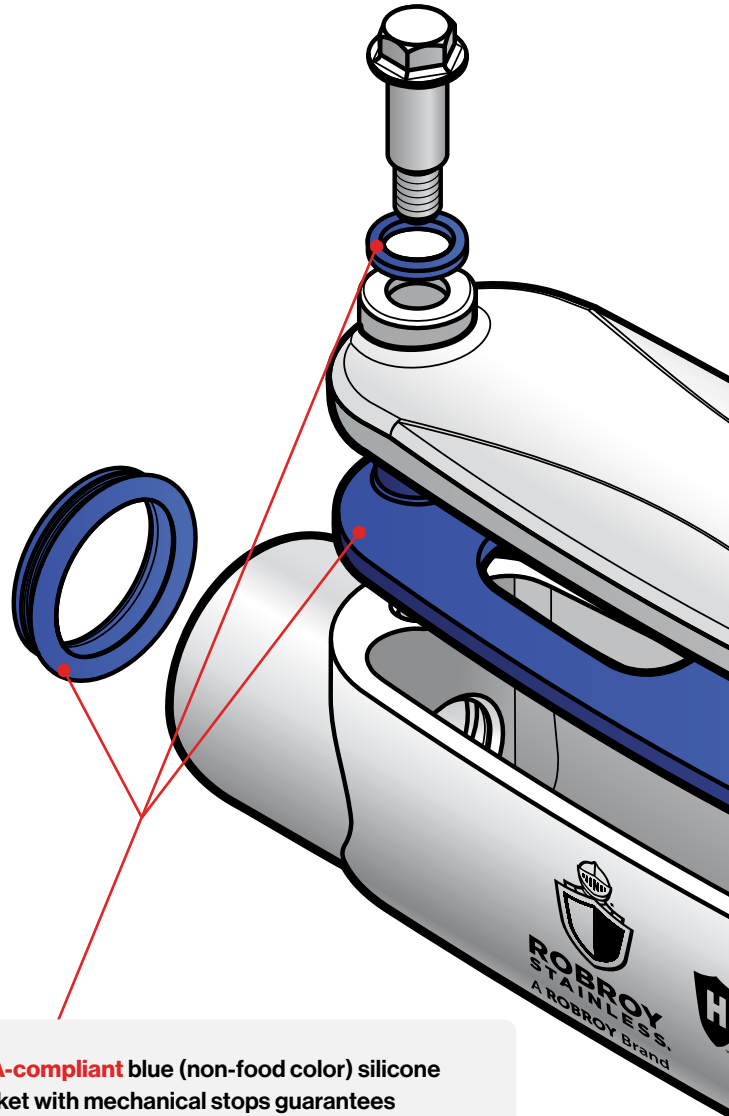
### Hygienic Logo

The Robroy® Hygienic symbol identifies products intended for use in the installation of electrical raceways for sanitary applications.



### NSF Certification

The NSF certification mark on a product means that the product has been tested and complies with all standard requirements of the NSF/ANSI/3-A 14159-1 and manufacturer's installation instructions.



**FDA-compliant** blue (non-food color) silicone gasket with mechanical stops guarantees optimized compression for environmental ratings and superior sealing.

Patented hygienic designed conduit body and cover maximizes cleanability and minimizes contaminant buildup of installed system.



Specially designed captive screw retention and gasket system eliminates risk of ingress and contamination.

Overall sealed system with innovative design, curved geometry, smooth surfaces, and a high degree of ingress protection against dust and high pressure / high temperature spray for added safety and sanitation within plant operations.

**Center aligned threading** of conduit and circular gasket ensures environmental and safety rating conformance of installed system.

**Oxidative Thermo Process** marking permanently marks products with no surface degradation, paper labels or stamped surfaces, discouraging dust particle or condensation retention and ultimately maximizing hygienic benefit.

# Preventing Problems Before They Happen!

## FDA & USDA Facility Concerns

Robroy F&B Manufacturing Survey on Pre-Design

# 50%

will replace in 2 to 8 Years due to Corrosion.



# #1

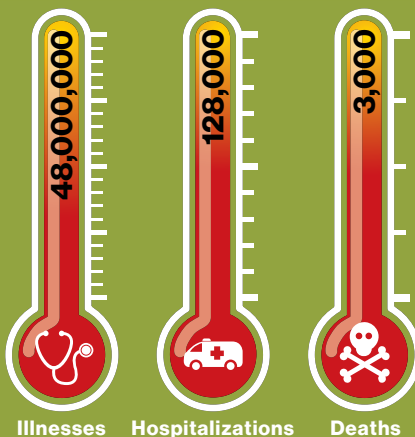
Risk concern attributed to contamination.

## Food & Beverage Recalls

Yearly count of symptoms and consequences in the U.S.

# 85%

of all food recalls are attributed to biological, foreign matter, and chemical contamination. Every part of a facility needs to address these issues, including raceway & utility support systems.



## Food-Related Fatalities

Annual **death count** from food-borne disease in the U.S.

# 450

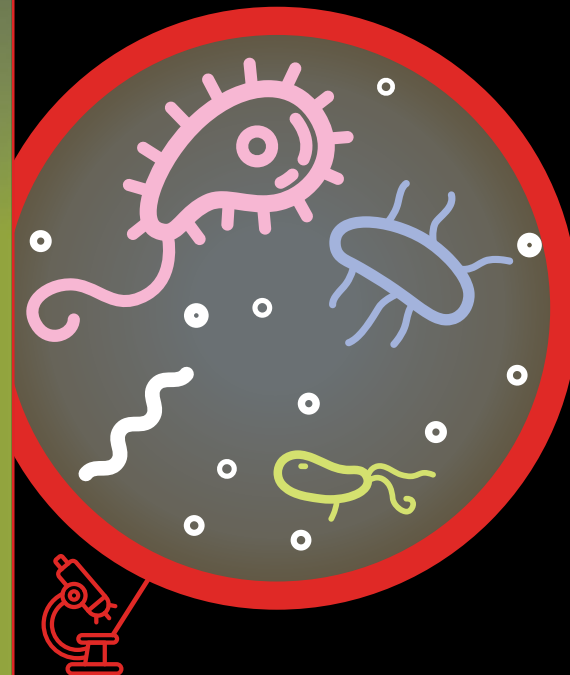
Salmonella

# 260

Listeria

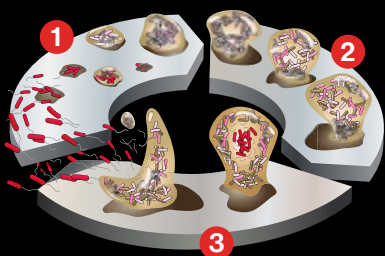
# 30

E. coli



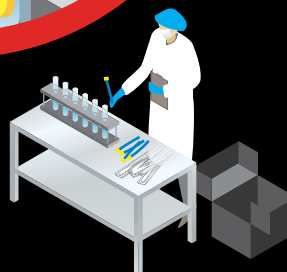
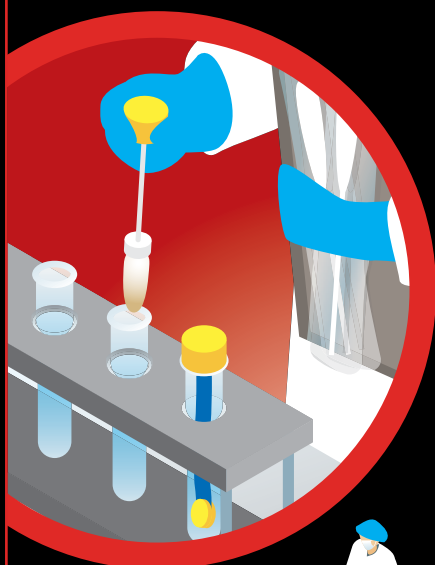
## Cycle of Microbial Growth

Microbial growth thrives on **flat, wet, gunky surfaces**! Because biofilm adds to corrosion potential, cleanability is essential to prevent contamination and corrosion.



## FDA “Environmental Sampling”

It's not enough to sample direct contact surfaces to mitigate risk of contamination of product. Non-food contact surfaces within the hygienic area envelope, including **drains, raceways and support structures**, should be tested for environmental contamination and designed for cleanability.



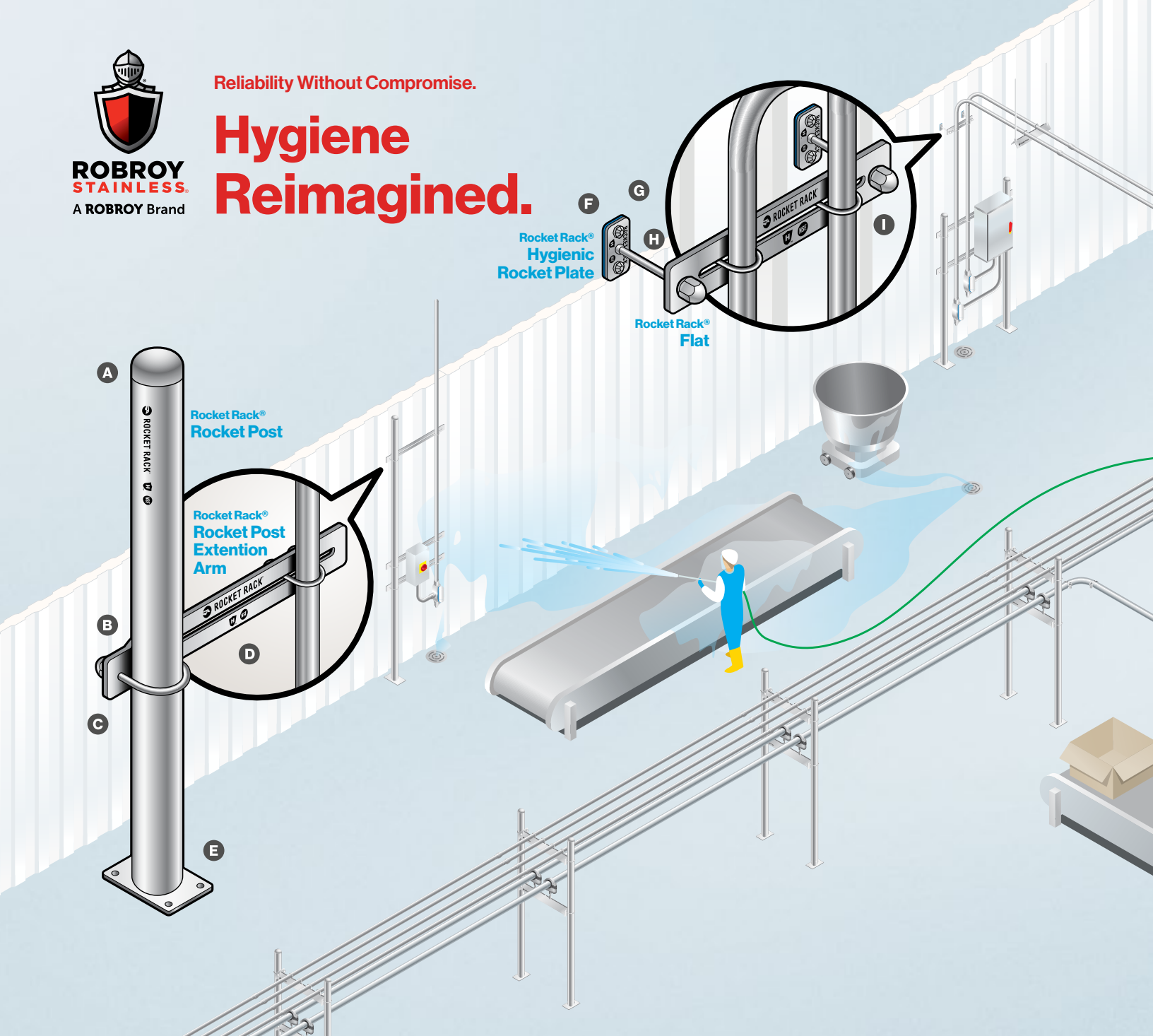
## ARC Courses

**Accredited • Regulated • Certified**

**End-Users, Engineers and Contractors**, are you battling the rising challenge of protecting a facility against costly corrosion or meeting stringent hygienic regulations? Robroy Stainless offers professional training to equip your team. The focused topical training will span from significant stainless product overview to proper installation for integral hygienic performance.

To learn more or schedule your training, contact our education coordinator at [corrosioncollege@robroy.com](mailto:corrosioncollege@robroy.com) or call 903.843.5591.

# Hygiene Reimagined.



## Rocket Post and Extension Arm

- A** Sealed weld caps on Rocket Posts for hermetically sealed system.
- B** Custom U-bolts and beveled cap nuts provide strong, sturdy support while eliminating the risk of exposed threads.
- C** Rounded corners for added worker safety.
- D** Available in vertical or horizontal support configurations, Extension Arms provide additional support surface. Contoured connection point ensures extension arm fits curvature of the post, eliminating the risk of rocking. Custom hygienic U-bolt and beveled cap nuts provided with the arm assure proper fit and eliminate the risk of exposed threads.
- E** Sealed weld mounting feet on Rocket Posts for hermetically sealed system.

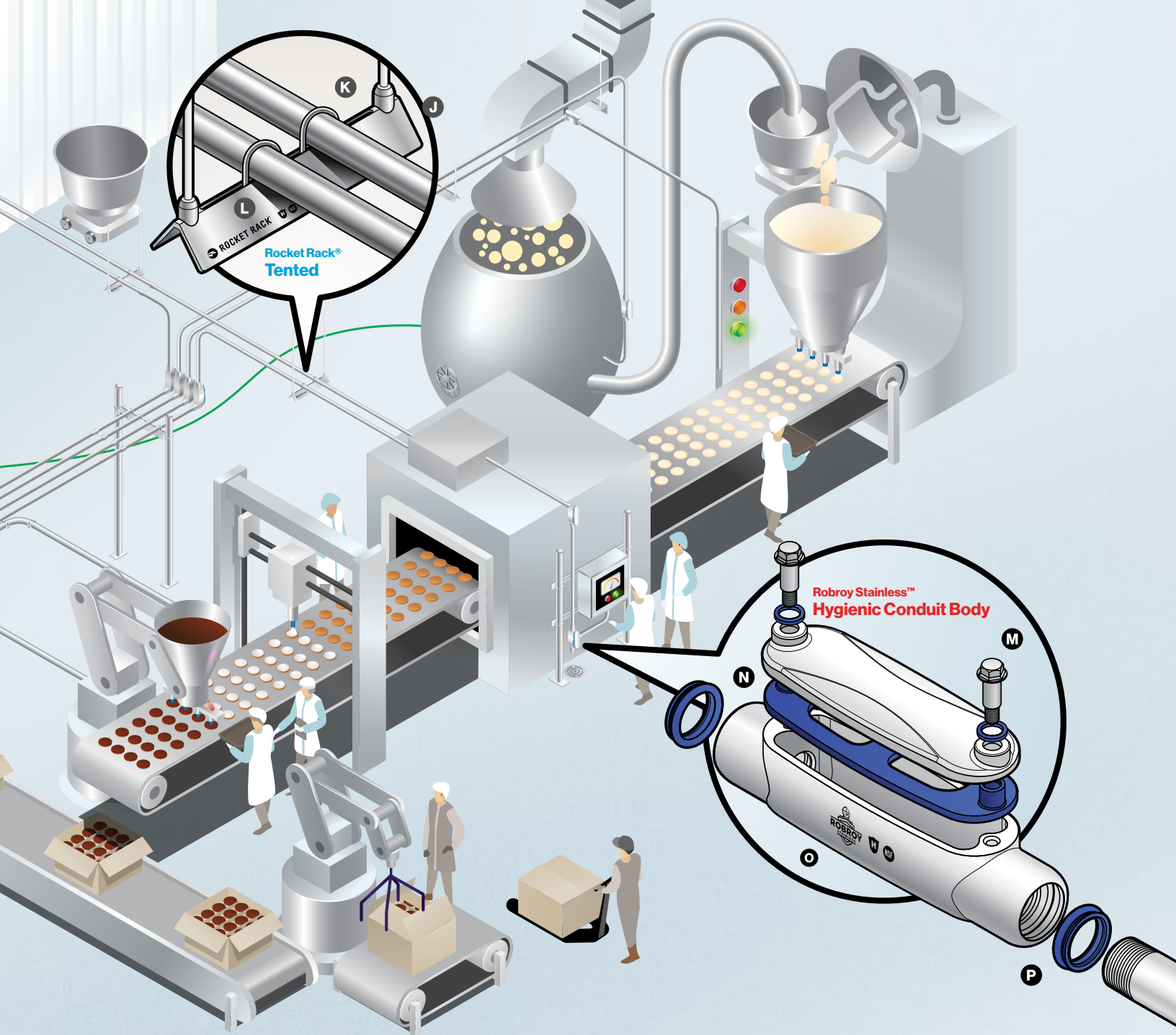
## Hygienic Rocket Plate

- F** Low profile design for use on IMP or other wall surfaces.
- G** Silicone FDA-compliant gasket protects against dust and water penetration and eliminates the need for time consuming caulking and re-caulking.
- H** Center hole threaded to accept rod, available with 2" or 4" bald rod standoffs for easy cleaning.

## Rocket Rack Flat

- I** Provides a vertical or horizontal variable surface mount area and frame for plant infrastructure.





### Rocket Rack Tented

Trapeze mounting using Rocket Rod provides overhead support with a smooth, easy-to-clean FDA-compliant encasement that is snug and tight with no exposed threads.

- J** Custom designed tented coupling and beveled cap nut, provided with Tented Rack, leave no gaps between the rack and the mounting rod.
- K** Slot in the heel of Tented Rack provides flexible, adaptable mounting location without the need for field cutting or drilling.
- L** Hygienic "tented" shape features sloped sides (45°) for water and dirt shedding and easy cleaning.

### Hygienic Conduit Body

With no flat surfaces or crevices the patented hygienic designed conduit body and cover maximizes cleanability and minimizes contaminate buildup of installed system. Overall sealed system with a high degree of ingress protection against dust and high pressure/high temperature spray for added safety and sanitation within plant operations.

- M** Specially designed captive screw retention and gasket system eliminates risk of ingress and contamination.
- N** FDA-compliant blue (non-food color) silicone gasket with mechanical stops guarantees optimized compression for environmental ratings.
- O** Oxidative Thermo Process marking permanently marks product with no surface degradation, paper labels or stamped surfaces, maximizing hygienic benefit.
- P** Center aligned threading of conduit and circular gasket ensures environmental and safety rating conformance of installed system.

## Stainless



## Description

Robroy Stainless Rigid Conduit is designed to provide protection for wiring and cable in electrical systems and withstand harsh corrosive environments. Conduit is available in 304 or 316 and polished to a bright finish allowing for a surface that requires minimal cleaning. Each 10' length of conduit is threaded at both ends and supplied with one coupling. Conduit is manufactured using center aligned technology for adherence to tighter tolerances for a better system installation. Couplings are specifically designed with longer throats and chamfered connection points to eliminate exposed threads and the build up of dirt and contaminants that would otherwise occur at the threads which also minimizes risk of corrosion.

## Standards

- cULus Listed
- UL 6A
- CSA C22.2 No. 45.2-08
- UL File Number: E98405

Catalog No.	Description	Weight Per Foot (lbs.)	Outside Diameter (in.)	Length (ft.)
RSCND304-050	Conduit 1/2 Inch 304	0.87	0.84	10
RSCND304-075	Conduit 3/4 Inch 304	1.15	1.05	10
RSCND304-100	Conduit 1 Inch 304	1.71	1.32	10
RSCND304-125	Conduit 1-1/4 Inch 304	2.32	1.66	10
RSCND304-150	Conduit 1-1/2 Inch 304	2.77	1.90	10
RSCND304-200	Conduit 2 Inch 304	3.73	2.38	10
RSCND304-250	Conduit 2-1/2 Inch 304	5.91	2.88	10
RSCND304-300	Conduit 3 Inch 304	7.73	3.50	10
RSCND304-400	Conduit 4 Inch 304	11.01	4.50	10
RSCND316-050	Conduit 1/2 Inch 316	0.87	0.84	10
RSCND316-075	Conduit 3/4 Inch 316	1.15	1.05	10
RSCND316-100	Conduit 1 Inch 316	1.71	1.32	10
RSCND316-125	Conduit 1-1/4 Inch 316	2.32	1.66	10
RSCND316-150	Conduit 1-1/2 Inch 316	2.77	1.90	10
RSCND316-200	Conduit 2 Inch 316	3.73	2.38	10
RSCND316-250	Conduit 2-1/2 Inch 316	5.91	2.88	10
RSCND316-300	Conduit 3 Inch 316	7.73	3.50	10
RSCND316-400	Conduit 4 Inch 316	11.01	4.50	10



## Hygienic



### Description

Robroy Stainless Hygienic Rigid Conduit is designed to provide protection for wiring and cable in electrical systems and withstand harsh corrosive environments. Conduit is available in 304 or 316 and polished to a bright finish allowing for a surface that requires minimal cleaning and meets sanitary requirements. Each 10' length of conduit is threaded at both ends and supplied with one hygienic coupling. Conduit is manufactured using center aligned technology for adherence to tighter tolerances for a better system installation. Hygienic couplings are specifically designed with longer throats and chamfered connection points to eliminate exposed threads and the build up of dirt and contaminants that would otherwise occur at the threads which also minimizes risk of corrosion. Hygienic couplings feature a circular gasket made of FDA-compliant silicone designed to maintain a sealed system for use in high temperature, high pressure wash-down areas or areas where excluding dusts, dirt and pests is required.

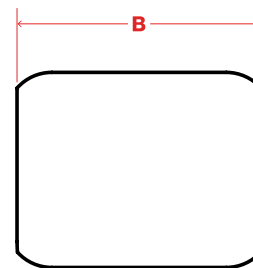
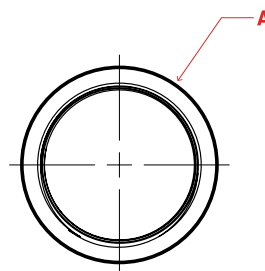
### Standards

- cULus Listed
- UL 6A
- UL File Number: E98405
- CSA C22.2 No 45.2-08
- UL 514B (Hygienic Coupling)
- TYPE 4X
- UL File Number: E200413 (Hygienic Coupling)
- NSF/ANSI/3-A 14159-1
- IEC IP69/IP69K

Catalog No.	Description	Weight Per Foot (lbs.)	Outside Diameter (in.)	Length (ft.)
RSCND304-050H	Hygienic Conduit 1/2 Inch 304	0.87	0.84	10
RSCND304-075H	Hygienic Conduit 3/4 Inch 304	1.15	1.05	10
RSCND304-100H	Hygienic Conduit 1 Inch 304	1.71	1.315	10
RSCND304-125H	Hygienic Conduit 1-1/4 Inch 304	2.32	1.66	10
RSCND304-150H	Hygienic Conduit 1-1/2 Inch 304	2.77	1.9	10
RSCND304-200H	Hygienic Conduit 2 Inch 304	3.73	2.375	10
RSCND316-050H	Hygienic Conduit 1/2 Inch 316	0.87	0.84	10
RSCND316-075H	Hygienic Conduit 3/4 Inch 316	1.15	1.05	10
RSCND316-100H	Hygienic Conduit 1 Inch 316	1.71	1.315	10
RSCND316-125H	Hygienic Conduit 1-1/4 Inch 316	2.32	1.66	10
RSCND316-150H	Hygienic Conduit 1-1/2 Inch 316	2.77	1.9	10
RSCND316-200H	Hygienic Conduit 2 Inch 316	3.73	2.375	10

# Couplings

## Stainless



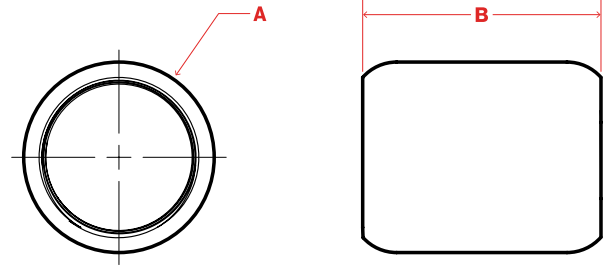
### Description

Robroy Stainless Couplings are designed to withstand harsh corrosive environments. Couplings are available in 304 or 316 and designed for use with stainless steel threaded conduit in order to connect threaded stainless steel conduit, elbows, nipples, etc. Couplings are specifically designed with longer throats and chamfered connection points to eliminate exposed threads and the build up of dirt and contaminants that would otherwise occur at the threads which also minimizes risk of corrosion.

### Standards

- cULus Listed
- UL 6A
- CSA C22.2 No. 45.2-08
- UL File Number: E98405

Catalog No.	Description	Weight Each (lbs.)	A Outside Diameter (in.)	B Overall Length (in.)
RSCPL304-050	Coupling 1/2 Inch 304	0.19	1.10	1.63
RSCPL304-075	Coupling 3/4 Inch 304	0.28	1.35	1.65
RSCPL304-100	Coupling 1 Inch 304	0.37	1.58	1.98
RSCPL304-125	Coupling 1-1/4 Inch 304	0.56	1.97	2.04
RSCPL304-150	Coupling 1-1/2 Inch 304	0.70	2.24	2.07
RSCPL304-200	Coupling 2 Inch 304	1.02	2.77	2.14
RSCPL304-250	Coupling 2-1/2 Inch 304	2.32	3.30	3.20
RSCPL304-300	Coupling 3 Inch 304	2.33	3.83	3.32
RSCPL304-400	Coupling 4 Inch 304	4.59	5.02	3.53
RSCPL316-050	Coupling 1/2 Inch 316	0.19	1.10	1.63
RSCPL316-075	Coupling 3/4 Inch 316	0.28	1.35	1.65
RSCPL316-100	Coupling 1 Inch 316	0.37	1.58	1.98
RSCPL316-125	Coupling 1-1/4 Inch 316	0.56	1.97	2.04
RSCPL316-150	Coupling 1-1/2 Inch 316	0.70	2.24	2.07
RSCPL316-200	Coupling 2 Inch 316	1.02	2.77	2.14
RSCPL316-250	Coupling 2-1/2 Inch 316	2.32	3.30	3.20
RSCPL316-300	Coupling 3 Inch 316	2.33	3.83	3.32
RSCPL316-400	Coupling 4 Inch 316	4.59	5.02	3.53



## Description

Robroy Stainless Hygienic Couplings are 316 stainless steel and are used to connect threaded stainless steel conduit, nipples or elbows. Hygienic couplings are specifically designed with longer throats and chamfered connection points to eliminate exposed threads and the build up of dirt and contaminants that would otherwise occur at the threads which also minimizes risk of corrosion. Hygienic couplings feature a circular gasket made of FDA-compliant silicone designed to maintain a sealed system for use in high temperature, high pressure wash-down areas or areas where excluding dusts, dirt and pests is required.

## Standards

- cULus Listed
- UL 514B
- CSA C22.2 No. 18.1-04
- TYPE 4X
- IP69/IP69K
- NSF/ANSI/3-A 14159-1
- UL File Number: E200413

Catalog No.	Description	Weight Each (lbs.)	A Outside Diameter (in.)	B Overall Length (in.)
RSTSF116H	Hygienic Coupling 1/2 Inch 316	0.50	1.29	2.33
RSTSF216H	Hygienic Coupling 3/4 Inch 316	0.61	1.50	2.38
RSTSF316H	Hygienic Coupling 1 Inch 316	0.88	1.77	2.73
RSTSF416H	Hygienic Coupling 1-1/4 Inch 316	1.22	2.15	2.88
RSTSF516H	Hygienic Coupling 1-1/2 Inch 316	1.43	2.39	2.94
RSTSF616H	Hygienic Coupling 2 Inch 316	2.30	3.20	3.31



## Description

Robroy Stainless Nipples are designed to withstand harsh corrosive environments. Nipples are available in 304 or 316 and are used to extend conduit systems and can be connected to boxes, enclosures, fittings and other lengths of conduit. Nipples are manufactured using center aligned technology for adherence to tighter tolerances for a better system installation.

*Can be used with both Traditional & Hygienic Systems, except close nipples - these are system specific. For Hygienic Close Nipples, see page 19.*

## Standards

- cULus Listed
- UL 6A
- CSA C22.2 No. 45.2-08
- UL File Number: E98405
- NSF/ANSI/3-A 14159-1

Catalog No.	Description	Weight Each (lbs.)	Outside Diameter (in.)	Length (in.)
RSNIP304-050	Nipple 1/2 Inch 304 Close	0.08	0.84	1.125
RSNIP304-050X2	Nipple 1/2 Inch 304 2 Inch long	0.145	0.84	2
RSNIP304-050X2-1/2	Nipple 1/2 Inch 304 2-1/2 Inch long	0.18	0.84	2.5
RSNIP304-050X3	Nipple 1/2 Inch 304 3 Inch long	0.22	0.84	3
RSNIP304-050X3-1/2	Nipple 1/2 Inch 304 3-1/2 Inch long	0.25	0.84	3.5
RSNIP304-050X4	Nipple 1/2 Inch 304 4 Inch long	0.29	0.84	4
RSNIP304-050X5	Nipple 1/2 Inch 304 5 Inch long	0.36	0.84	5
RSNIP304-050X6	Nipple 1/2 Inch 304 6 Inch long	0.44	0.84	6
RSNIP304-050X8	Nipple 1/2 Inch 304 8 Inch long	0.58	0.84	8
RSNIP304-050X10	Nipple 1/2 Inch 304 10 Inch long	0.73	0.84	10
RSNIP304-050X12	Nipple 1/2 Inch 304 12 Inch long	0.87	0.84	12
RSNIP304-075	Nipple 3/4 Inch 304 Close	0.13	1.05	1.375

Catalog No.	Description	Weight Each (lbs.)	Outside Diameter (in.)	Length (in.)
RSNIP304-075X2	Nipple 3/4 Inch 304 2 Inch long	0.19	1.05	2
RSNIP304-075X2-1/2	Nipple 3/4 Inch 304 2-1/2 Inch long	0.24	1.05	2.5
RSNIP304-075X3	Nipple 3/4 Inch 304 3 Inch long	0.29	1.05	3
RSNIP304-075X3-1/2	Nipple 3/4 Inch 304 3-1/2 Inch long	0.34	1.05	3.5
RSNIP304-075X4	Nipple 3/4 Inch 304 4 Inch long	0.38	1.05	4
RSNIP304-075X5	Nipple 3/4 Inch 304 5 Inch long	0.48	1.05	5
RSNIP304-075X6	Nipple 3/4 Inch 304 6 Inch long	0.58	1.05	6
RSNIP304-075X8	Nipple 3/4 Inch 304 8 Inch long	0.77	1.05	8
RSNIP304-075X10	Nipple 3/4 Inch 304 10 Inch long	0.96	1.05	10
RSNIP304-075X12	Nipple 3/4 Inch 304 12 Inch long	1.15	1.05	12
RSNIP304-100	Nipple 1 Inch 304 Close	0.21	1.315	1.5
RSNIP304-100X2	Nipple 1 Inch 304 2 Inch long	0.29	1.315	2
RSNIP304-100X2-1/2	Nipple 1 Inch 304 2-1/2 Inch long	0.36	1.315	2.5
RSNIP304-100X3	Nipple 1 Inch 304 3 Inch long	0.43	1.315	3
RSNIP304-100X3-1/2	Nipple 1 Inch 304 3-1/2 Inch long	0.5	1.315	3.5
RSNIP304-100X4	Nipple 1 Inch 304 4 Inch long	0.57	1.315	4
RSNIP304-100X5	Nipple 1 Inch 304 5 Inch long	0.71	1.315	5
RSNIP304-100X6	Nipple 1 Inch 304 6 Inch long	0.86	1.315	6
RSNIP304-100X8	Nipple 1 Inch 304 8 Inch long	1.14	1.315	8
RSNIP304-100X10	Nipple 1 Inch 304 10 Inch long	1.43	1.315	10
RSNIP304-100X12	Nipple 1 Inch 304 12 Inch long	1.71	1.315	12
RSNIP304-125	Nipple 1-1/4 Inch 304 Close	0.31	1.66	1.625
RSNIP304-125X2-1/2	Nipple 1-1/4 Inch 304 2-1/2 Inch long	0.48	1.66	2.5
RSNIP304-125X3	Nipple 1-1/4 Inch 304 3 Inch long	0.58	1.66	3
RSNIP304-125X3-1/2	Nipple 1-1/4 Inch 304 3-1/2 Inch long	0.68	1.66	3.5
RSNIP304-125X4	Nipple 1-1/4 Inch 304 4 Inch long	0.77	1.66	4
RSNIP304-125X5	Nipple 1-1/4 Inch 304 5 Inch long	0.97	1.66	5
RSNIP304-125X6	Nipple 1-1/4 Inch 304 6 Inch long	1.16	1.66	6
RSNIP304-125X8	Nipple 1-1/4 Inch 304 8 Inch long	1.55	1.66	8
RSNIP304-125X10	Nipple 1-1/4 Inch 304 10 Inch long	1.93	1.66	10
RSNIP304-125X12	Nipple 1-1/4 Inch 304 12 Inch long	2.32	1.66	12
RSNIP304-150	Nipple 1-1/2 Inch 304 Close	0.4	1.9	1.75
RSNIP304-150X2-1/2	Nipple 1-1/2 Inch 304 2-1/2 Inch long	0.58	1.9	2.5
RSNIP304-150X3	Nipple 1-1/2 Inch 304 3 Inch long	0.69	1.9	3
RSNIP304-150X3-1/2	Nipple 1-1/2 Inch 304 3-1/2 Inch long	0.81	1.9	3.5
RSNIP304-150X4	Nipple 1-1/2 Inch 304 4 Inch long	0.92	1.9	4
RSNIP304-150X5	Nipple 1-1/2 Inch 304 5 Inch long	1.15	1.9	5
RSNIP304-150X6	Nipple 1-1/2 Inch 304 6 Inch long	1.39	1.9	6
RSNIP304-150X8	Nipple 1-1/2 Inch 304 8 Inch long	1.85	1.9	8
RSNIP304-150X10	Nipple 1-1/2 Inch 304 10 Inch long	2.31	1.9	10
RSNIP304-150X12	Nipple 1-1/2 Inch 304 12 Inch long	2.77	1.9	12

Catalog No.	Description	Weight Each (lbs.)	Outside Diameter (in.)	Length (in.)
RSNIP304-200	Nipple 2 Inch 304 Close	0.62	2.375	2
RSNIP304-200X2-1/2	Nipple 2 Inch 304 2-1/2 Inch long	0.78	2.375	2.5
RSNIP304-200X3	Nipple 2 Inch 304 3 Inch long	0.93	2.375	3
RSNIP304-200X3-1/2	Nipple 2 Inch 304 3-1/2 Inch long	1.09	2.375	3.5
RSNIP304-200X4	Nipple 2 Inch 304 4 Inch long	1.24	2.375	4
RSNIP304-200X5	Nipple 2 Inch 304 5 Inch long	1.55	2.375	5
RSNIP304-200X6	Nipple 2 Inch 304 6 Inch long	1.87	2.375	6
RSNIP304-200X8	Nipple 2 Inch 304 8 Inch long	2.49	2.375	8
RSNIP304-200X10	Nipple 2 Inch 304 10 Inch long	3.11	2.375	10
RSNIP304-200X12	Nipple 2 Inch 304 12 Inch long	3.73	2.375	12
RSNIP304-250	Nipple 2-1/2 Inch 304 Close	1.23	2.875	2.5
RSNIP304-250X3-1/2	Nipple 2-1/2 Inch 304 3-1/2 Inch long	1.72	2.875	3.5
RSNIP304-250X4	Nipple 2-1/2 Inch 304 4 Inch long	1.97	2.875	4
RSNIP304-250X5	Nipple 2-1/2 Inch 304 5 Inch long	2.46	2.875	5
RSNIP304-250X6	Nipple 2-1/2 Inch 304 6 Inch long	2.96	2.875	6
RSNIP304-250X8	Nipple 2-1/2 Inch 304 8 Inch long	3.94	2.875	8
RSNIP304-250X10	Nipple 2-1/2 Inch 304 10 Inch long	4.93	2.875	10
RSNIP304-250X12	Nipple 2-1/2 Inch 304 12 Inch long	5.91	2.875	12
RSNIP304-300	Nipple 3 Inch 304 Close	1.69	3.5	2.625
RSNIP304-300X3-1/2	Nipple 3 Inch 304 3-1/2 Inch long	2.25	3.5	3.5
RSNIP304-300X4	Nipple 3 Inch 304 4 Inch long	2.58	3.5	4
RSNIP304-300X5	Nipple 3 Inch 304 5 Inch long	3.22	3.5	5
RSNIP304-300X6	Nipple 3 Inch 304 6 Inch long	3.87	3.5	6
RSNIP304-300X8	Nipple 3 Inch 304 8 Inch long	5.15	3.5	8
RSNIP304-300X10	Nipple 3 Inch 304 10 Inch long	6.44	3.5	10
RSNIP304-300X12	Nipple 3 Inch 304 12 Inch long	7.73	3.5	12
RSNIP304-400	Nipple 4 Inch 304 Close	2.64	4.5	2.875
RSNIP304-400X3-1/2	Nipple 4 Inch 304 3-1/2 Inch long	3.21	4.5	3.5
RSNIP304-400X4	Nipple 4 Inch 304 4 Inch long	3.67	4.5	4
RSNIP304-400X5	Nipple 4 Inch 304 5 Inch long	4.59	4.5	5
RSNIP304-400X6	Nipple 4 Inch 304 6 Inch long	5.51	4.5	6
RSNIP304-400X8	Nipple 4 Inch 304 8 Inch long	7.34	4.5	8
RSNIP304-400X10	Nipple 4 Inch 304 10 Inch long	9.18	4.5	10
RSNIP304-400X12	Nipple 4 Inch 304 12 Inch long	11.01	4.5	12
RSNIP316-050	Nipple 1/2 Inch 316 Close	0.08	0.84	1.125
RSNIP316-050X2	Nipple 1/2 Inch 316 2 Inch long	0.145	0.84	2
RSNIP316-050X2-1/2	Nipple 1/2 Inch 316 2-1/2 Inch long	0.18	0.84	2.5
RSNIP316-050X3	Nipple 1/2 Inch 316 3 Inch long	0.22	0.84	3
RSNIP316-050X3-1/2	Nipple 1/2 Inch 316 3-1/2 Inch long	0.25	0.84	3.5
RSNIP316-050X4	Nipple 1/2 Inch 316 4 Inch long	0.29	0.84	4
RSNIP316-050X5	Nipple 1/2 Inch 316 5 Inch long	0.36	0.84	5

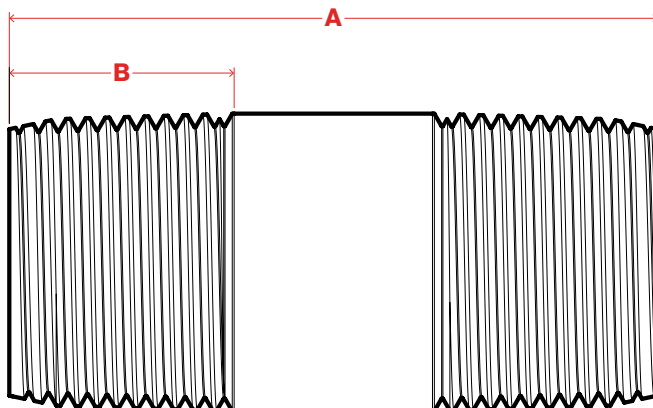
Catalog No.	Description	Weight Each (lbs.)	Outside Diameter (in.)	Length (in.)
RSNIP316-050X6	Nipple 1/2 Inch 316 6 Inch long	0.44	0.84	6
RSNIP316-050X8	Nipple 1/2 Inch 316 8 Inch long	0.58	0.84	8
RSNIP316-050X10	Nipple 1/2 Inch 316 10 Inch long	0.73	0.84	10
RSNIP316-050X12	Nipple 1/2 Inch 316 12 Inch long	0.87	0.84	12
RSNIP316-075	Nipple 3/4 Inch 316 Close	0.13	1.05	1.375
RSNIP316-075X2	Nipple 3/4 Inch 316 2 Inch long	0.19	1.05	2
RSNIP316-075X2-1/2	Nipple 3/4 Inch 316 2-1/2 Inch long	0.24	1.05	2.5
RSNIP316-075X3	Nipple 3/4 Inch 316 3 Inch long	0.29	1.05	3
RSNIP316-075X3-1/2	Nipple 3/4 Inch 316 3-1/2 Inch long	0.34	1.05	3.5
RSNIP316-075X4	Nipple 3/4 Inch 316 4 Inch long	0.38	1.05	4
RSNIP316-075X5	Nipple 3/4 Inch 316 5 Inch long	0.48	1.05	5
RSNIP316-075X6	Nipple 3/4 Inch 316 6 Inch long	0.58	1.05	6
RSNIP316-075X8	Nipple 3/4 Inch 316 8 Inch long	0.77	1.05	8
RSNIP316-075X10	Nipple 3/4 Inch 316 10 Inch long	0.96	1.05	10
RSNIP316-075X12	Nipple 3/4 Inch 316 12 Inch long	1.15	1.05	12
RSNIP316-100	Nipple 1 Inch 316 Close	0.21	1.315	1.5
RSNIP316-100X2	Nipple 1 Inch 316 2 Inch long	0.29	1.315	2
RSNIP316-100X2-1/2	Nipple 1 Inch 316 2-1/2 Inch long	0.36	1.315	2.5
RSNIP316-100X3	Nipple 1 Inch 316 3 Inch long	0.43	1.315	3
RSNIP316-100X3-1/2	Nipple 1 Inch 316 3-1/2 Inch long	0.5	1.315	3.5
RSNIP316-100X4	Nipple 1 Inch 316 4 Inch long	0.57	1.315	4
RSNIP316-100X5	Nipple 1 Inch 316 5 Inch long	0.71	1.315	5
RSNIP316-100X6	Nipple 1 Inch 316 6 Inch long	0.86	1.315	6
RSNIP316-100X8	Nipple 1 Inch 316 8 Inch long	1.14	1.315	8
RSNIP316-100X10	Nipple 1 Inch 316 10 Inch long	1.43	1.315	10
RSNIP316-100X12	Nipple 1 Inch 316 12 Inch long	1.71	1.315	12
RSNIP316-125	Nipple 1-1/4 Inch 316 Close	0.31	1.66	1.625
RSNIP316-125X2-1/2	Nipple 1-1/4 Inch 316 2-1/2 Inch long	0.48	1.66	2.5
RSNIP316-125X3	Nipple 1-1/4 Inch 316 3 Inch long	0.58	1.66	3
RSNIP316-125X3-1/2	Nipple 1-1/4 Inch 316 3-1/2 Inch long	0.68	1.66	3.5
RSNIP316-125X4	Nipple 1-1/4 Inch 316 4 Inch long	0.77	1.66	4
RSNIP316-125X5	Nipple 1-1/4 Inch 316 5 Inch long	0.97	1.66	5
RSNIP316-125X6	Nipple 1-1/4 Inch 316 6 Inch long	1.16	1.66	6
RSNIP316-125X8	Nipple 1-1/4 Inch 316 8 Inch long	1.55	1.66	8
RSNIP316-125X10	Nipple 1-1/4 Inch 316 10 Inch long	1.93	1.66	10
RSNIP316-125X12	Nipple 1-1/4 Inch 316 12 Inch long	2.32	1.66	12
RSNIP316-150	Nipple 1-1/2 Inch 316 Close	0.4	1.9	1.75
RSNIP316-150X2-1/2	Nipple 1-1/2 Inch 316 2-1/2 Inch long	0.58	1.9	2.5
RSNIP316-150X3	Nipple 1-1/2 Inch 316 3 Inch long	0.69	1.9	3
RSNIP316-150X3-1/2	Nipple 1-1/2 Inch 316 3-1/2 Inch long	0.81	1.9	3.5
RSNIP316-150X4	Nipple 1-1/2 Inch 316 4 Inch long	0.92	1.9	4

**Stainless & Hygienic**

Catalog No.	Description	Weight Each (lbs.)	Outside Diameter (in.)	Length (in.)
RSNIP316-150X5	Nipple 1-1/2 Inch 316 5 Inch long	1.15	1.9	5
RSNIP316-150X6	Nipple 1-1/2 Inch 316 6 Inch long	1.39	1.9	6
RSNIP316-150X8	Nipple 1-1/2 Inch 316 8 Inch long	1.85	1.9	8
RSNIP316-150X10	Nipple 1-1/2 Inch 316 10 Inch long	2.31	1.9	10
RSNIP316-150X12	Nipple 1-1/2 Inch 316 12 Inch long	2.77	1.9	12
RSNIP316-200	Nipple 2 Inch 316 Close	0.62	2.375	2
RSNIP316-200X2-1/2	Nipple 2 Inch 316 2-1/2 Inch long	0.78	2.375	2.5
RSNIP316-200X3	Nipple 2 Inch 316 3 Inch long	0.93	2.375	3
RSNIP316-200X3-1/2	Nipple 2 Inch 316 3-1/2 Inch long	1.09	2.375	3.5
RSNIP316-200X4	Nipple 2 Inch 316 4 Inch long	1.24	2.375	4
RSNIP316-200X5	Nipple 2 Inch 316 5 Inch long	1.55	2.375	5
RSNIP316-200X6	Nipple 2 Inch 316 6 Inch long	1.87	2.375	6
RSNIP316-200X8	Nipple 2 Inch 316 8 Inch long	2.49	2.375	8
RSNIP316-200X10	Nipple 2 Inch 316 10 Inch long	3.11	2.375	10
RSNIP316-200X12	Nipple 2 Inch 316 12 Inch long	3.73	2.375	12
RSNIP316-250	Nipple 2-1/2 Inch 316 Close	1.23	2.875	2.5
RSNIP316-250X3-1/2	Nipple 2-1/2 Inch 316 3-1/2 Inch long	1.72	2.875	3.5
RSNIP316-250X4	Nipple 2-1/2 Inch 316 4 Inch long	1.97	2.875	4
RSNIP316-250X5	Nipple 2-1/2 Inch 316 5 Inch long	2.46	2.875	5
RSNIP316-250X6	Nipple 2-1/2 Inch 316 6 Inch long	2.96	2.875	6
RSNIP316-250X8	Nipple 2-1/2 Inch 316 8 Inch long	3.94	2.875	8
RSNIP316-250X10	Nipple 2-1/2 Inch 316 10 Inch long	4.93	2.875	10
RSNIP316-250X12	Nipple 2-1/2 Inch 316 12 Inch long	5.91	2.875	12
RSNIP316-300	Nipple 3 Inch 316 Close	1.69	3.5	2.625
RSNIP316-300X3-1/2	Nipple 3 Inch 316 3-1/2 Inch long	2.25	3.5	3.5
RSNIP316-300X4	Nipple 3 Inch 316 4 Inch long	2.58	3.5	4
RSNIP316-300X5	Nipple 3 Inch 316 5 Inch long	3.22	3.5	5
RSNIP316-300X6	Nipple 3 Inch 316 6 Inch long	3.87	3.5	6
RSNIP316-300X8	Nipple 3 Inch 316 8 Inch long	5.15	3.5	8
RSNIP316-300X10	Nipple 3 Inch 316 10 Inch long	6.44	3.5	10
RSNIP316-300X12	Nipple 3 Inch 316 12 Inch long	7.73	3.5	12
RSNIP316-400	Nipple 4 Inch 316 Close	2.64	4.5	2.875
RSNIP316-400X3-1/2	Nipple 4 Inch 316 3-1/2 Inch long	3.21	4.5	3.5
RSNIP316-400X4	Nipple 4 Inch 316 4 Inch long	3.67	4.5	4
RSNIP316-400X5	Nipple 4 Inch 316 5 Inch long	4.59	4.5	5
RSNIP316-400X6	Nipple 4 Inch 316 6 Inch long	5.51	4.5	6
RSNIP316-400X8	Nipple 4 Inch 316 8 Inch long	7.34	4.5	8
RSNIP316-400X10	Nipple 4 Inch 316 10 Inch long	9.18	4.5	10
RSNIP316-400X12	Nipple 4 Inch 316 12 Inch long	11.01	4.5	12



## Hygienic



*Space required to meet environmental rating of hygienic fittings.*

## Description

Robroy Stainless Hygienic Close Nipples are used in a hygienic installation to connect boxes, enclosures, fittings or lengths of conduit. Hygienic close nipples are specifically designed at a minimal length to ensure proper system connection and maintain environmental ratings when used with other Robroy Stainless products. When properly installed, the connection is secure, easily cleanable and eliminates the risk of exposed threads. Hygienic close nipples are manufactured using center aligned technology for adherence to tighter tolerances for a better system installation.

## Standards

- NSF/ANSI/3-A 14159-1

Catalog No.	Description	Weight Each (lbs.)	A Overall Length (in.)	B Thread Length (in.)
RSNIP304-050H	Hygienic Nipple 1/2 Inch Close 304	0.13	2.26	0.78
RSNIP304-075H	Hygienic Nipple 3/4 Inch Close 304	0.17	2.29	0.79
RSNIP304-100H	Hygienic Nipple 1 Inch Close 304	0.27	2.62	0.98
RSNIP304-125H	Hygienic Nipple 1-1/4 Inch Close 304	0.46	2.97	1
RSNIP304-150H	Hygienic Nipple 1-1/2 Inch Close 304	0.58	3.08	1.03
RSNIP304-200H	Hygienic Nipple 2 Inch Close 304	0.80	3.39	1.06
RSNIP316-050H	Hygienic Nipple 1/2 Inch Close 316	0.13	2.26	0.78
RSNIP316-075H	Hygienic Nipple 3/4 Inch Close 316	0.17	2.29	0.79
RSNIP316-100H	Hygienic Nipple 1 Inch Close 316	0.27	2.62	0.98
RSNIP316-125H	Hygienic Nipple 1-1/4 Inch Close 316	0.46	2.97	1
RSNIP316-150H	Hygienic Nipple 1-1/2 Inch Close 316	0.58	3.08	1.03
RSNIP316-200H	Hygienic Nipple 2 Inch Close 316	0.80	3.39	1.06



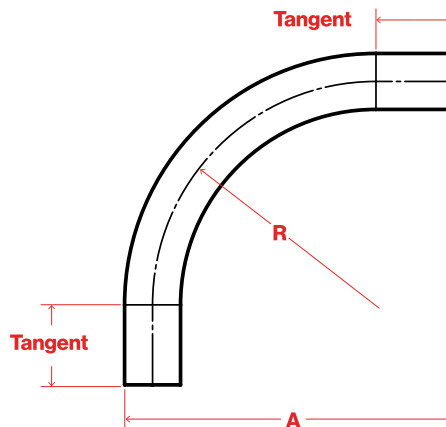
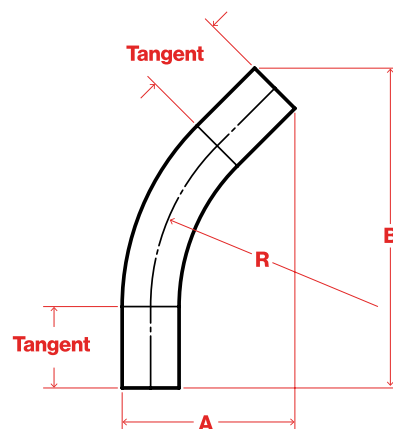
## Description

Robroy Stainless Elbows are designed to withstand harsh corrosive environments. Elbows are available in 304 or 316 and are used to aid in the changing of direction of a raceway. Elbows are manufactured using center aligned technology for adherence to tighter tolerances for a better system installation.

*Can be used with both Traditional & Hygienic Systems*

## Standards

- cULus Listed
- UL 6A
- CSA C22.2 No. 45.2-08
- UL File Number: E98405
- NSF/ANSI/3-A 14159-1



Catalog No.	Description	Weight Each (lbs.)	Offset A (in.)	Offset B (in.)	Tangent (in.)	Radii (in.)	Bend (Degree)	Nipple Length	Unbent Length
RSREL304-050X45	Rigid Elbow 1/2 Inch 304 45 Degree	0.73	44.70	9.36	3.55	4.00	45	10	10.00
RSREL304-075X45	Rigid Elbow 3/4 Inch 304 45 Degree	1.05	5.01	10.29	3.95	4.50	45	11	11.00
RSREL304-100X45	Rigid Elbow 1 Inch 304 45 Degree	1.71	5.68	11.46	4.06	5.75	45	12	12.00
RSREL304-125X45	Rigid Elbow 1-1/4 Inch 304 45 Degree	2.71	6.24	12.23	3.82	7.25	45	14	13.00
RSREL304-150X45	Rigid Elbow 1-1/2 Inch 304 45 Degree	3.23	6.74	13.03	3.82	8.25	45	14	14.00
RSREL304-200X45	Rigid Elbow 2 Inch 304 45 Degree	5.44	8.70	16.95	5.50	9.50	45	17.50	17.50
RSREL304-250X45	Rigid Elbow 2-1/2 Inch 304 45 Degree	11.82	11.10	21.89	7.88	10.50	45	24	22.00
RSREL304-300X45	Rigid Elbow 3 Inch 304 45 Degree	14.82	13.03	22.45	6.89	13.00	45	23	23.00
RSREL304-400X45	Rigid Elbow 4 Inch 304 45 Degree	25.69	14.69	27.79	8.72	16.00	45	28	28.00
RSREL304-050X90	Rigid Elbow 1/2 Inch 304 90 Degree	0.83	6.92	n/a	2.25	4.00	90	11.50	11.50
RSREL304-075X90	Rigid Elbow 3/4 Inch 304 90 Degree	1.20	7.78	n/a	2.75	4.50	90	12.50	12.50
RSREL304-100X90	Rigid Elbow 1 Inch 304 90 Degree	2.10	9.285	n/a	2.875	5.75	90	14.75	14.75
RSREL304-125X90	Rigid Elbow 1-1/4 Inch 304 90 Degree	3.43	11.267	n/a	3.187	7.25	90	17.75	17.75
RSREL304-150X90	Rigid Elbow 1-1/2 Inch 304 90 Degree	4.53	12.575	n/a	3.375	8.25	90	19.625	19.75
RSREL304-200X90	Rigid Elbow 2 Inch 304 90 Degree	7.15	14.50	n/a	3.813	9.50	90	23	22.00
RSREL304-250X90	Rigid Elbow 2-1/2 Inch 304 90 Degree	13.79	17.69	n/a	5.753	10.50	90	28	28.50
RSREL304-300X90	Rigid Elbow 3 Inch 304 90 Degree	20.61	20.50	n/a	5.753	13.00	90	32	32.00
RSREL304-400X90	Rigid Elbow 4 Inch 304 90 Degree	36.01	25.43	n/a	7.18	16.00	90	39.25	39.50
RSREL316-050X45	Rigid Elbow 1/2 Inch 316 45 Degree	0.73	44.70	9.36	3.55	4.00	45	10	10.00
RSREL316-075X45	Rigid Elbow 3/4 Inch 316 45 Degree	1.05	5.01	10.29	3.95	4.50	45	11	11.00
RSREL316-100X45	Rigid Elbow 1 Inch 316 45 Degree	1.71	5.68	11.46	4.06	5.75	45	12	12.00
RSREL316-125X45	Rigid Elbow 1-1/4 Inch 316 45 Degree	2.71	6.24	12.23	3.82	7.25	45	14	13.00
RSREL316-150X45	Rigid Elbow 1-1/2 Inch 316 45 Degree	3.23	6.74	13.03	3.82	8.25	45	14	14.00
RSREL316-200X45	Rigid Elbow 2 Inch 316 45 Degree	5.44	8.70	16.95	5.50	9.50	45	17.50	17.50
RSREL316-250X45	Rigid Elbow 2-1/2 Inch 316 45 Degree	11.82	11.10	21.89	7.88	10.50	45	24	22.00
RSREL316-300X45	Rigid Elbow 3 Inch 316 45 Degree	14.82	13.03	22.45	6.89	13.00	45	23	23.00
RSREL316-400X45	Rigid Elbow 4 Inch 316 45 Degree	25.69	14.69	27.79	8.72	16.00	45	28	28.00
RSREL316-050X90	Rigid Elbow 1/2 Inch 316 90 Degree	0.83	6.92	n/a	2.25	4.00	90	11.50	11.50
RSREL316-075X90	Rigid Elbow 3/4 Inch 316 90 Degree	1.20	7.78	n/a	2.75	4.50	90	12.50	12.50
RSREL316-100X90	Rigid Elbow 1 Inch 316 90 Degree	2.10	9.285	n/a	2.875	5.75	90	14.75	14.75
RSREL316-125X90	Rigid Elbow 1-1/4 Inch 316 90 Degree	3.43	11.267	n/a	3.187	7.25	90	17.75	17.75
RSREL316-150X90	Rigid Elbow 1-1/2 Inch 316 90 Degree	4.53	12.575	n/a	2.00	3.375	90	19.625	19.75
RSREL316-200X90	Rigid Elbow 2 Inch 316 90 Degree	7.15	14.50	n/a	3.813	9.50	90	23	22.00
RSREL316-250X90	Rigid Elbow 2-1/2 Inch 316 90 Degree	13.79	17.69	n/a	5.753	10.50	90	28	28.50
RSREL316-300X90	Rigid Elbow 3 Inch 316 90 Degree	20.61	20.50	n/a	5.753	13.00	90	32	32.00
RSREL316-400X90	Rigid Elbow 4 Inch 316 90 Degree	36.01	25.43	n/a	7.18	16.00	90	39.25	39.50

# Conduit Bodies

Stainless

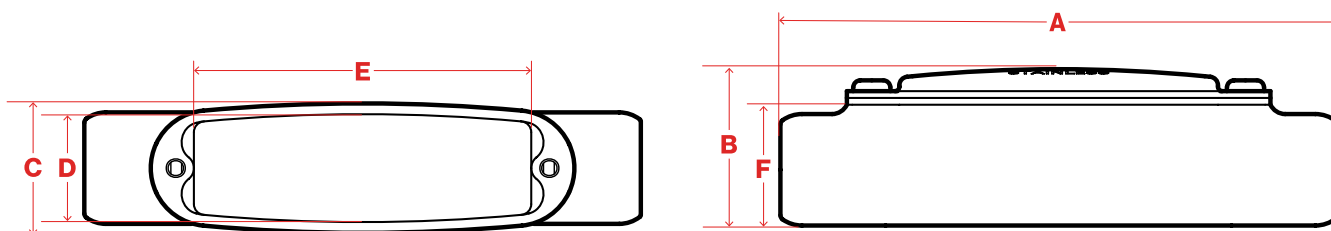


## Description

Robroy Stainless Conduit Bodies are designed to withstand harsh corrosive environments. Conduit bodies are 316 stainless steel and are used to change the direction of conduit and make wiring pulls and connections. Traditional conduit bodies come with a stamped stainless cover and nitrile gasket. Contoured design of conduit bodies allows for larger cubic capacity without increasing the total weight of the fitting.

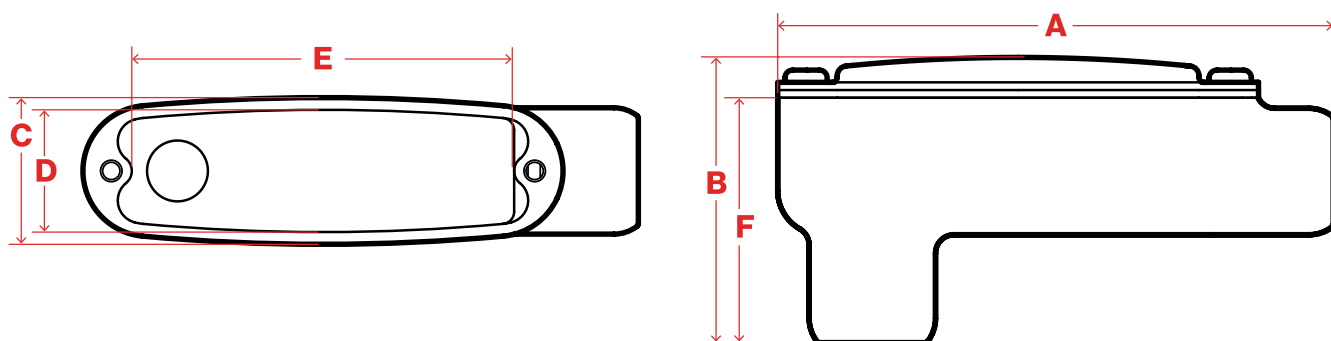
## Standards

- cULus Listed
- UL 514B
- CSA C22.2 No. 18.1-04
- TYPE 4X
- UL File Number: E231035



## C

Catalog No.	Description	Weight Each (lbs.)	A Overall Length (in.)	B Overall Height (in.)	C Overall Width (in.)	D Width of Opening (in.)	E Length of Opening (in.)	F Body Height (in.)	Cubic Capacity (in.)
RSC116	C Conduit Body 1/2 Inch 316	1.41	6.45	1.84	1.50	1.25	3.91	1.43	5
RSC216	C Conduit Body 3/4 Inch 316	1.95	7.18	2.30	1.76	1.48	4.48	1.84	9
RSC316	C Conduit Body 1 Inch 316	2.68	8.27	2.50	2.06	1.75	5.30	1.97	13
RSC416	C Conduit Body 1-1/4 Inch 316	4.08	9.03	2.78	2.46	2.15	5.94	2.50	24
RSC516	C Conduit Body 1-1/2 Inch 316	4.78	10.10	2.95	2.74	2.43	7.00	2.63	35
RSC616	C Conduit Body 2 Inch 316	7.88	11.70	3.95	3.46	3.15	8.32	3.63	77



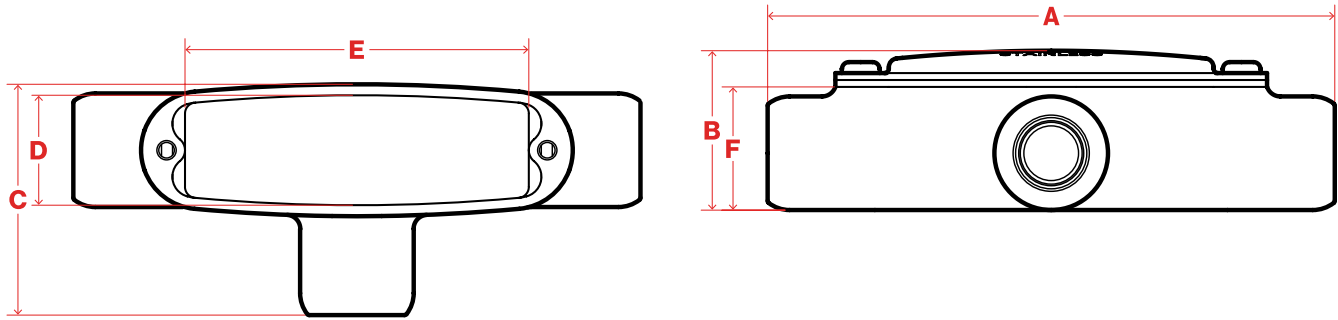
## LB

\*Rated raintight (not Type 4X)

Catalog No.	Description	Weight Each (lbs.)	A Overall Length (in.)	B Overall Height (in.)	C Overall Width (in.)	D Width of Opening (in.)	E Length of Opening (in.)	F Body Height (in.)	Cubic Capacity (in.)
RSLB116	LB Conduit Body 1/2 Inch 316	1.48	5.68	2.92	1.50	1.25	3.91	2.50	5
RSLB216	LB Conduit Body 3/4 Inch 316	2.05	6.40	3.48	1.76	1.48	4.48	3.02	9
RSLB316	LB Conduit Body 1 Inch 316	2.88	7.46	3.83	2.06	1.75	5.30	3.30	13
RSLB416	LB Conduit Body 1-1/4 Inch 316	4.37	8.22	4.11	2.46	2.15	5.94	3.82	24
RSLB516	LB Conduit Body 1-1/2 Inch 316	7.12	9.28	4.29	2.74	2.43	7.00	3.97	35
RSLB616	LB Conduit Body 2 Inch 316	8.39	10.85	5.37	3.46	3.15	8.32	5.04	77
RSLB816*	LB Conduit Body 3 Inch 316	16.19	14.26	6.86	5.21	3.87	10.95	6.12	217
RSLB1016*	LB Conduit Body 4 Inch 316	25.78	16.90	8.05	6.37	4.97	13.55	7.17	400

# Conduit Bodies

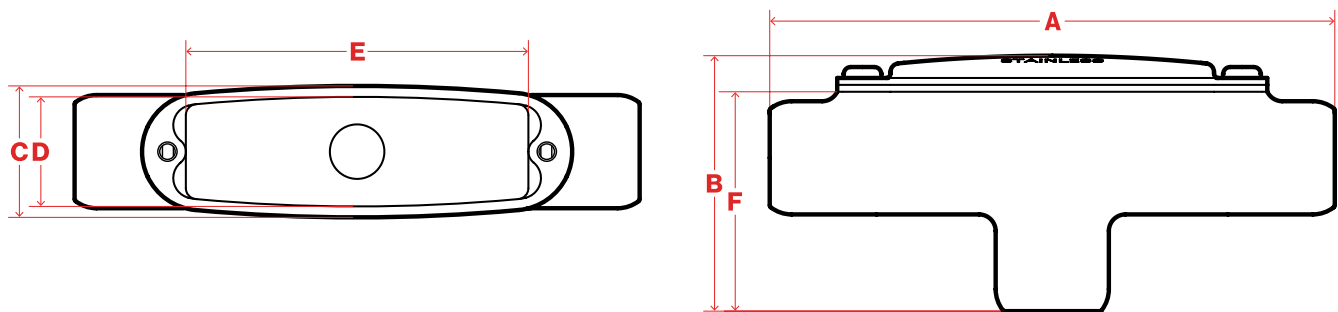
Stainless



T

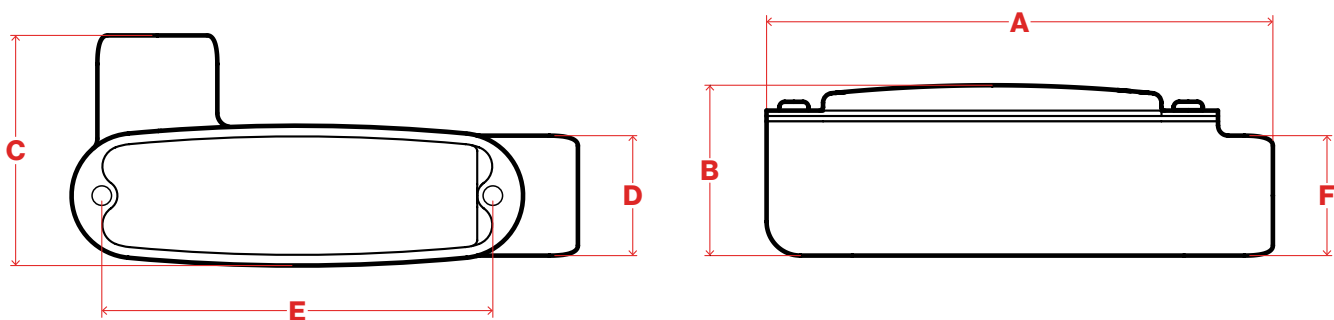
*\*Rated raintight (not Type 4X)*

Catalog No.	Description	Weight Each (lbs.)	A Overall Length (in.)	B Overall Height (in.)	C Overall Width (in.)	D Width of Opening (in.)	E Length of Opening (in.)	F Body Height (in.)	Cubic Capacity (in.)
RST116	T Conduit Body 1/2 Inch 316	1.70	6.45	1.84	2.75	1.25	3.91	1.43	5
RST216	T Conduit Body 3/4 Inch 316	2.33	7.18	2.30	3.02	1.48	4.48	1.84	9
RST316	T Conduit Body 1 Inch 316	3.21	8.27	2.50	3.41	1.75	5.30	1.97	13
RST416	T Conduit Body 1-1/4 Inch 316	4.78	9.03	2.78	3.83	2.15	5.94	2.50	24
RST516	T Conduit Body 1-1/2 Inch 316	5.57	10.10	2.95	4.13	2.43	7.00	2.63	35
RST616	T Conduit Body 2 Inch 316	9.23	11.70	3.95	5.03	3.15	8.32	3.63	77
RST816*	T Conduit Body 3 Inch 316	18.90	16.27	5.34	6.67	3.75	10.97	4.59	217
RST1016*	T Conduit Body 4 Inch 316	30.25	18.70	6.44	8.03	4.89	13.54	5.58	400



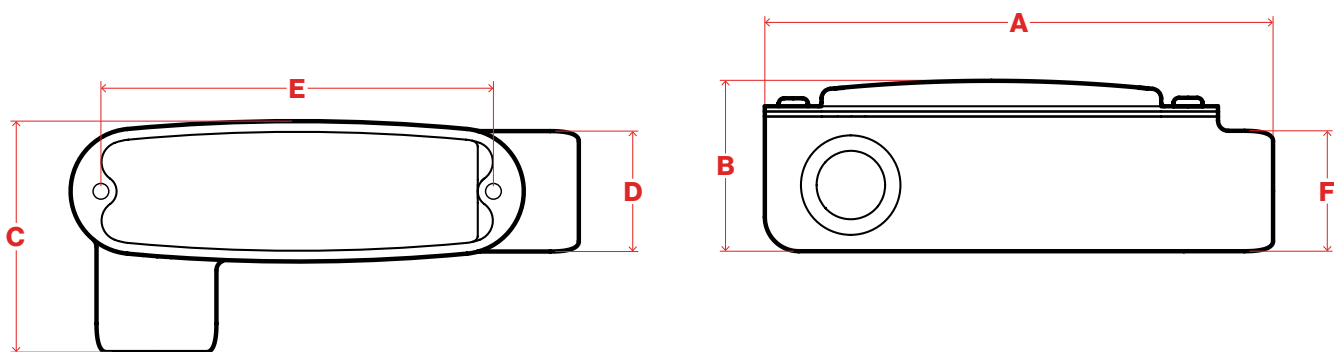
TB

Catalog No.	Description	Weight Each (lbs.)	A Overall Length (in.)	B Overall Height (in.)	C Overall Width (in.)	D Width of Opening (in.)	E Length of Opening (in.)	F Body Height (in.)	Cubic Capacity (in.)
RSTB116	TB Conduit Body 1/2 Inch 316	1.70	6.45	2.95	1.50	1.25	3.91	2.53	5
RSTB216	TB Conduit Body 3/4 Inch 316	2.33	7.18	3.51	1.76	1.48	4.48	3.05	9
RSTB316	TB Conduit Body 1 Inch 316	3.22	8.27	3.86	2.06	1.75	5.30	3.33	13
RSTB416	TB Conduit Body 1-1/4 Inch 316	4.79	9.03	4.15	2.46	2.15	5.94	3.86	24
RSTB516	TB Conduit Body 1-1/2 Inch 316	5.57	10.10	4.32	2.74	2.43	7.00	4.00	35
RSTB616	TB Conduit Body 2 Inch 316	9.24	11.70	5.46	3.46	3.15	8.32	5.14	77



## LL

Catalog No.	Description	Weight Each (lbs.)	A Overall Length (in.)	B Overall Height (in.)	C Overall Width (in.)	D Width of Opening (in.)	E Length of Opening (in.)	F Body Height (in.)	Cubic Capacity (in.)
RSLL116	LL Conduit Body 1/2 Inch 316	1.4	5.68	1.85	2.65	1.5	4.23	1.29	5
RSLL216	LL Conduit Body 3/4 Inch 316	2.1	6.4	2.3	2.97	1.76	4.82	1.5	9
RSLL316	LL Conduit Body 1 Inch 316	3.2	7.46	2.51	3.39	2.06	5.76	1.77	13
RSLL416	LL Conduit Body 1-1/4 Inch 316	4.5	8.22	3.04	3.82	2.46	6.49	2.15	24
RSLL516	LL Conduit Body 1-1/2 Inch 316	5.4	9.28	3.26	4.13	2.74	7.64	2.39	35
RSLL616	LL Conduit Body 2 Inch 316	9.2	10.85	4.31	5.03	3.46	8.92	2.99	77

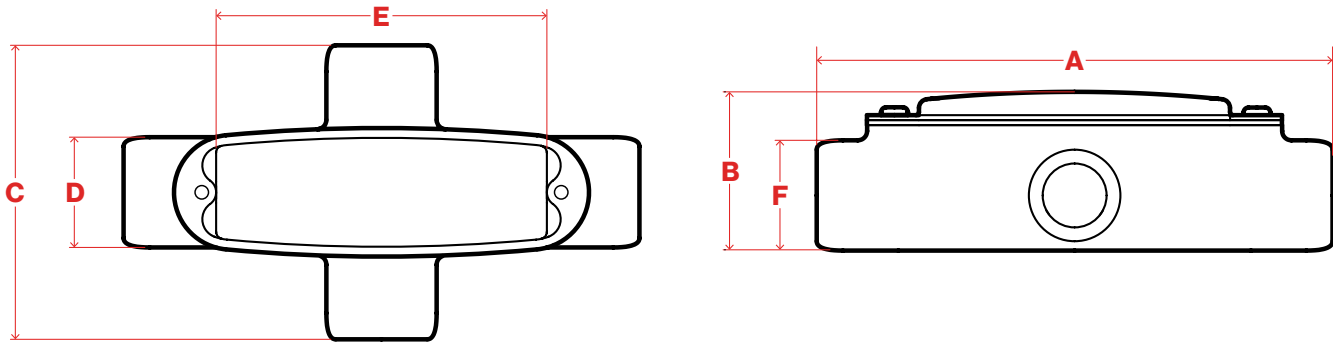


## LR

Catalog No.	Description	Weight Each (lbs.)	A Overall Length (in.)	B Overall Height (in.)	C Overall Width (in.)	D Width of Opening (in.)	E Length of Opening (in.)	F Body Height (in.)	Cubic Capacity (in.)
RSLR116	LR Conduit Body 1/2 Inch 316	1.4	5.68	1.85	2.65	1.5	4.23	1.29	5
RSLR216	LR Conduit Body 3/4 Inch 316	2.1	6.4	2.3	2.97	1.76	4.82	1.5	9
RSLR316	LR Conduit Body 1 Inch 316	3.2	7.46	2.51	3.39	2.06	5.76	1.77	13
RSLR416	LR Conduit Body 1-1/4 Inch 316	4.5	8.22	3.04	3.82	2.46	6.49	2.15	24
RSLR516	LR Conduit Body 1-1/2 Inch 316	5.4	9.28	3.26	4.13	2.74	7.64	2.39	35
RSLR616	LR Conduit Body 2 Inch 316	9.2	10.85	4.31	5.03	3.46	8.92	2.99	77

# Conduit Bodies

Stainless



X

Catalog No.	Description	Weight Each (lbs.)	A Overall Length (in.)	B Overall Height (in.)	C Overall Width (in.)	D Width of Opening (in.)	E Length of Opening (in.)	F Body Height (in.)	Cubic Capacity (in.)
RSX116	X Conduit Body 1/2 Inch 316	2	6.45	1.88	3.79	1.5	4.23	1.29	5
RSX216	X Conduit Body 3/4 Inch 316	2.8	7.18	2.34	4.18	1.76	4.82	1.5	9
RSX316	X Conduit Body 1 Inch 316	4	8.27	2.54	4.71	2.06	5.76	1.77	13
RSX416	X Conduit Body 1-1/4 Inch 316	5.7	9.03	3.04	5.19	2.46	6.49	2.15	24
RSX516	X Conduit Body 1 -1/2 Inch 316	6.8	10.1	3.29	5.53	2.74	7.64	2.39	35
RSX616	X Conduit Body 2 Inch 316	11.8	11.7	4.43	6.6	3.46	8.92	2.99	77



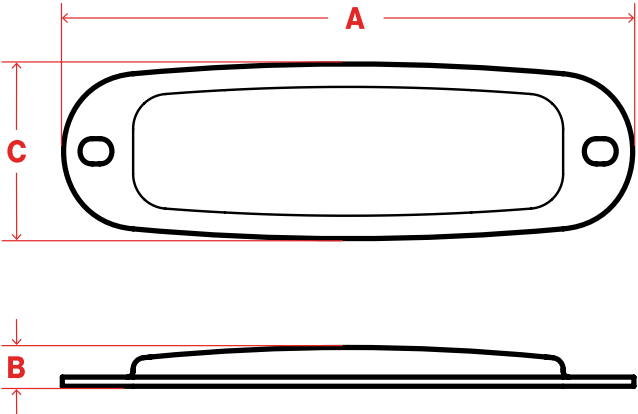
# Stamped Covers

Stainless



## Description

Robroy Stainless replacement covers and screw set for Traditional Conduit Bodies are stamped stainless steel with nitrile gasket. Heavy duty stainless steel pan head cover screws maintain a superior environmental rating and essentially eliminate the hassle associated with screw breakage.



Catalog No.	Description	Weight Each (lbs.)	A Overall Length (in.)	B Overall Height (in.)	C Overall Width (in.)
RSFC116	Conduit Body Formed (Stamped) Cover 1/2 Inch 316	0.21	4.91	0.33	1.50
RSFC216	Conduit Body Formed (Stamped) Cover 3/4 Inch 316	0.25	5.63	0.38	1.76
RSFC316	Conduit Body Formed (Stamped) Cover 1 Inch 316	0.37	6.65	0.45	2.07
RSFC416	Conduit Body Formed (Stamped) Cover 1-1/4 Inch 316	0.49	7.40	0.50	2.46
RSFC516	Conduit Body Formed (Stamped) Cover 1-1/2 Inch 316	0.62	8.46	0.58	2.74
RSFC616	Conduit Body Formed (Stamped) Cover 2 Inch 316	0.92	10.00	0.68	3.46



## Hygienic

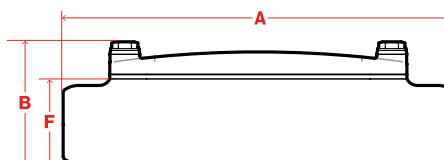
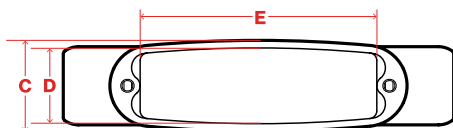


### Description

Robroy Stainless Hygienic Conduit Bodies are designed to withstand harsh corrosive environments. Conduit bodies are 316 stainless steel and are used to change the direction of conduit and make wiring pulls and connections. Hygienic conduit bodies come with a cast stainless cover, an FDA-compliant silicone gasket and sure stop hex screws. All female threads include an FDA-compliant silicone circular gasket. Contoured design of conduit bodies allows for larger cubic capacity without increasing the total weight of the fitting.

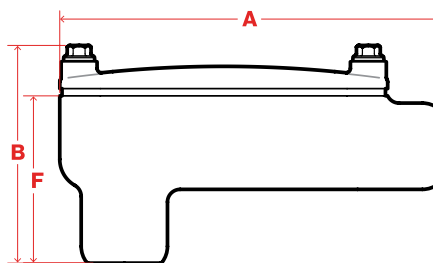
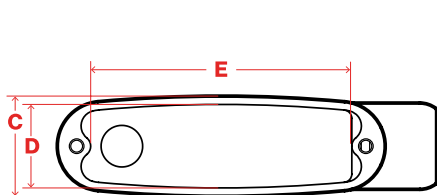
### Standards

- cULus Listed
- UL 514B
- CSA C22.2 No. 18.1-04
- TYPE 4X
- IP69/IP69K
- NSF/ANSI/3-A 14159-1
- UL File Number: E231035
- UL File Number: E489286



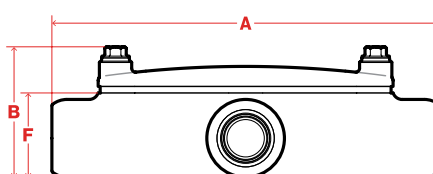
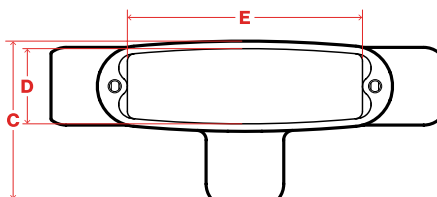
### C

Catalog No.	Description	Weight Each (lbs.)	A Overall Length (in.)	B Overall Height (in.)	C Overall Width (in.)	D Width of Opening (in.)	E Length of Opening (in.)	F Body Height (in.)	Cubic Capacity (in.)
RSC116H	C Hygienic Conduit Body 1/2 Inch 316 with Conduit Entry Gasket	1.54	6.45	2.44	1.50	1.25	3.91	1.43	5
RSC216H	C Hygienic Conduit Body 3/4 Inch 316 with Conduit Entry Gasket	2.23	7.18	2.85	1.76	1.48	4.48	1.84	9
RSC316H	C Hygienic Conduit Body 1 Inch 316 with Conduit Entry Gasket	3.06	8.27	3.07	2.06	1.75	5.30	1.97	13
RSC416H	C Hygienic Conduit Body 1-1/4 Inch 316 with Conduit Entry Gasket	4.52	9.03	3.26	2.46	2.15	5.94	2.50	24
RSC516H	C Hygienic Conduit Body 1-1/2 Inch 316 with Conduit Entry Gasket	5.46	10.10	3.67	2.74	2.43	7.00	2.63	35
RSC616H	C Hygienic Conduit Body 2 Inch 316 with Conduit Entry Gasket	8.96	11.70	4.67	3.46	3.15	8.32	3.63	77



## LB

Catalog No.	Description	Weight Each (lbs.)	A Overall Length (in.)	B Overall Height (in.)	C Overall Width (in.)	D Width of Opening (in.)	E Length of Opening (in.)	F Body Height (in.)	Cubic Capacity (in.)
RSLB116H	LB Hygienic Conduit Body 1/2 Inch 316 with Conduit Entry Gasket	1.59	5.68	3.51	1.50	1.25	3.91	2.50	5
RSLB216H	LB Hygienic Conduit Body 3/4 Inch 316 with Conduit Entry Gasket	2.33	6.40	4.03	1.76	1.48	4.48	3.02	9
RSLB316H	LB Hygienic Conduit Body 1 Inch 316 with Conduit Entry Gasket	3.30	7.46	4.40	2.06	1.75	5.30	3.30	13
RSLB416H	LB Hygienic Conduit Body 1-1/4 Inch 316 with Conduit Entry Gasket	4.81	8.22	4.59	2.46	2.15	5.94	3.82	24
RSLB516H	LB Hygienic Conduit Body 1-1/2 Inch 316 with Conduit Entry Gasket	5.81	9.28	5.01	2.74	2.43	7.00	3.97	35
RSLB616H	LB Hygienic Conduit Body 2 Inch 316 with Conduit Entry Gasket	9.51	10.85	6.09	3.46	3.15	8.32	5.04	77

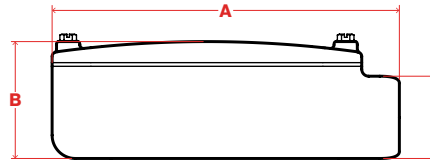
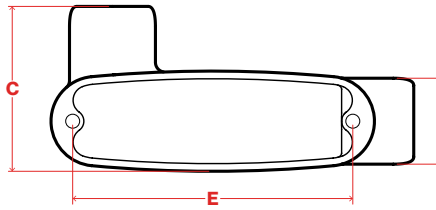


## T

Catalog No.	Description	Weight Each (lbs.)	A Overall Length (in.)	B Overall Height (in.)	C Overall Width (in.)	D Width of Opening (in.)	E Length of Opening (in.)	F Body Height (in.)	Cubic Capacity (in.)
RST116H	T Hygienic Conduit Body 1/2 Inch 316 with Conduit Entry Gasket	1.82	6.45	2.44	2.75	1.25	3.91	1.43	5
RST216H	T Hygienic Conduit Body 3/4 Inch 316 with Conduit Entry Gasket	2.61	7.18	2.85	3.02	1.48	4.48	1.84	9
RST316H	T Hygienic Conduit Body 1 Inch 316 with Conduit Entry Gasket	3.58	8.27	3.07	3.41	1.75	5.30	1.97	13
RST416H	T Hygienic Conduit Body 1-1/4 Inch 316 with Conduit Entry Gasket	5.19	9.03	3.26	3.83	2.15	5.94	2.50	24
RST516H	T Hygienic Conduit Body 1-1/2 Inch 316 with Conduit Entry Gasket	6.20	10.10	3.67	4.13	2.43	7.00	2.63	35
RST616H	T Hygienic Conduit Body 2 Inch 316 with Conduit Entry Gasket	10.25	11.70	4.67	5.03	3.15	8.32	3.63	77

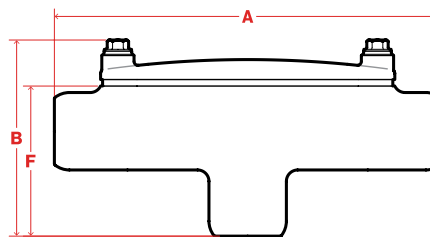
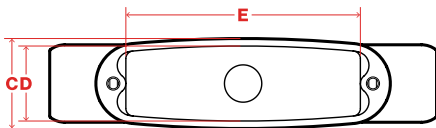


## Hygienic



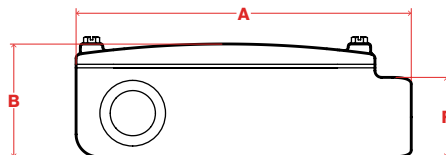
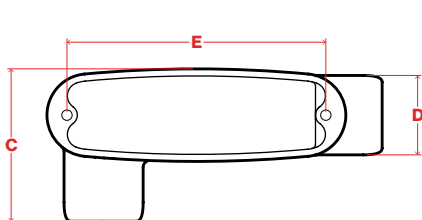
### LL

Catalog No.	Description	Weight Each (lbs.)	A Overall Length (in.)	B Overall Height (in.)	C Overall Width (in.)	D Width of Opening (in.)	E Length of Opening (in.)	F Body Height (in.)	Cubic Capacity (in.)
RSLL116H	LL Hygienic Conduit Body 1/2 Inch 316	1.6	5.68	1.85	2.65	1.15	4.23	1.29	5
RSLL216H	LL Hygienic Conduit Body 3/4 Inch 316	2.4	6.4	2.3	2.97	1.21	4.82	1.5	9
RSLL316H	LL Hygienic Conduit Body 1 Inch 316	3.6	7.46	2.51	3.39	1.33	5.76	1.77	13
RSLL416H	LL Hygienic Conduit Body 1-1/4 Inch 316	5.1	8.22	3.04	3.82	1.36	6.49	2.15	24
RSLL516H	LL Hygienic Conduit Body 1-1/2 Inch 316	6.2	9.28	3.26	4.13	1.39	7.64	2.39	35
RSLL616H	LL Hygienic Conduit Body 2 Inch 316	10.6	10.85	4.31	5.03	1.57	8.92	2.99	77



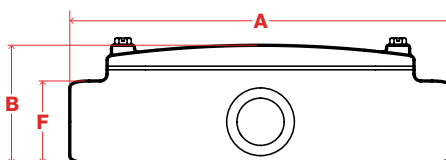
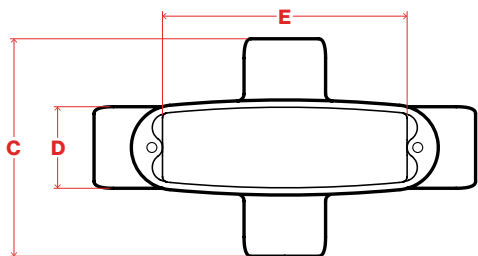
### TB

Catalog No.	Description	Weight Each (lbs.)	A Overall Length (in.)	B Overall Height (in.)	C Overall Width (in.)	D Width of Opening (in.)	E Length of Opening (in.)	F Body Height (in.)	Cubic Capacity (in.)
RSTB116H	TB Hygienic Conduit Body 1/2 Inch 316 with Conduit Entry Gasket	1.82	6.45	3.54	1.50	1.25	3.91	2.53	5
RSTB216H	TB Hygienic Conduit Body 3/4 Inch 316 with Conduit Entry Gasket	2.62	7.18	4.06	1.76	1.48	4.48	3.05	9
RSTB316H	TB Hygienic Conduit Body 1 Inch 316 with Conduit Entry Gasket	3.58	8.27	4.43	2.06	1.75	5.30	3.33	13
RSTB416H	TB Hygienic Conduit Body 1-1/4 Inch 316 with Conduit Entry Gasket	5.19	9.03	4.63	2.46	2.15	5.94	3.86	24
RSTB516H	TB Hygienic Conduit Body 1-1/2 Inch 316 with Conduit Entry Gasket	6.17	10.10	5.04	2.74	2.43	7.00	4.00	35
RSTB616H	TB Hygienic Conduit Body 2 Inch 316 with Conduit Entry Gasket	10.20	11.70	6.18	3.46	3.15	8.32	5.14	77



## LR

Catalog No.	Description	Weight Each (lbs.)	A Overall Length (in.)	B Overall Height (in.)	C Overall Width (in.)	D Width of Opening (in.)	E Length of Opening (in.)	F Body Height (in.)	Cubic Capacity (in.)
RSLR116H	LR Hygienic Conduit Body 1/2 Inch 316	1.6	5.68	1.85	2.65	1.5	4.23	1.29	5
RSLR216H	LR Hygienic Conduit Body 3/4 Inch 316	2.4	6.4	2.3	2.97	1.76	4.82	1.5	9
RSLR316H	LR Hygienic Conduit Body 1 Inch 316	3.6	7.46	2.51	3.39	2.06	5.76	1.77	13
RSLR416H	LR Hygienic Conduit Body 1-1/4 Inch 316	5.1	8.22	3.04	3.82	2.46	6.49	2.15	24
RSLR516H	LR Hygienic Conduit Body 1-1/2 Inch 316	6.2	9.28	3.26	4.13	2.74	7.64	2.39	35
RSLR616H	LR Hygienic Conduit Body 2 Inch 316	10.6	10.85	4.31	5.03	3.46	8.92	2.99	77

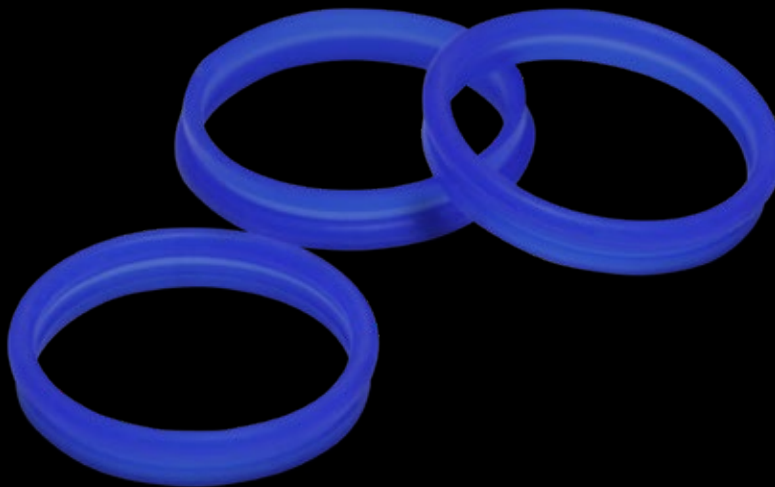


## X

Catalog No.	Description	Weight Each (lbs.)	A Overall Length (in.)	B Overall Height (in.)	C Overall Width (in.)	D Width of Opening (in.)	E Length of Opening (in.)	F Body Height (in.)	Cubic Capacity (in.)
RSX116H	X Hygienic Conduit Body 1/2 Inch 316	2.2	6.45	1.88	3.79	1.5	4.23	1.29	5
RSX216H	X Hygienic Conduit Body 3/4 Inch 316	3.1	7.18	2.34	4.18	1.76	4.82	1.5	9
RSX316H	X Hygienic Conduit Body 1 Inch 316	4.5	8.27	2.54	4.71	2.06	5.76	1.77	13
RSX416H	X Hygienic Conduit Body 1-1/4 Inch 316	6.3	9.03	3.04	5.19	2.46	6.49	2.15	24
RSX516H	X Hygienic Conduit Body 1-1/2 Inch 316	7.6	10.1	3.29	5.53	2.74	7.64	2.39	35
RSX616H	X Hygienic Conduit Body 2 Inch 316	13.2	11.7	4.43	6.6	3.46	8.92	2.99	77



## Hygienic



## Description

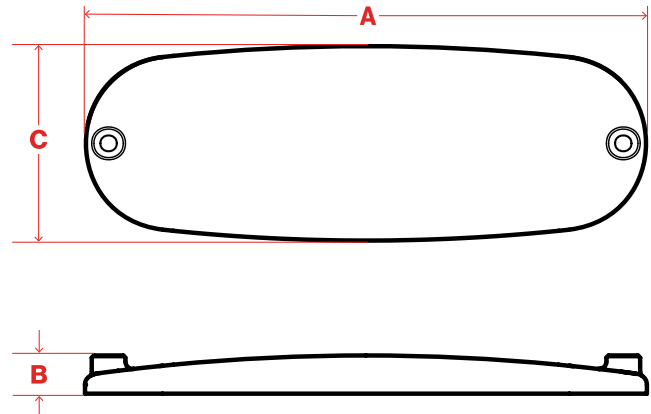
FDA compliant blue (non-food color) silicone circular gaskets provide superior sealing over a wide operating temperature range and are an integral part of ensuring the environmental rating of the installed system. Convenient spare gasket kits make it easy to replace circular gaskets in female threaded connection points that may have been damaged by improper or careless assembly procedures. Use of a lubricant can facilitate assembly but it is important that only a FDA compliant dry type lubricant be used.

Catalog No.	Description	Weight Per Pricing Unit (lbs)	Standard Pack Quantity	UPC	Avail. Code	Material Type	Catalog Number Trade Size
RSSOGSK1	Spare Gasket 1/2 Inch Trade Size FDA Compliant Silicone	0.004	6	784011928071	01	FDA compliant Silicone	1/2"
RSSOGSK2	Spare Gasket 3/4 Inch Trade Size FDA Compliant Silicone	0.010	6	784011928088	01	FDA compliant Silicone	3/4"
RSSOGSK3	Spare Gasket 1 Inch Trade Size FDA Compliant Silicone	0.010	6	784011928095	01	FDA compliant Silicone	1"
RSSOGSK4	Spare Gasket 1 1/4 Inch Trade Size FDA Compliant Silicone	0.010	6	784011928101	01	FDA compliant Silicone	1 1/4"
RSSOGSK5	Spare Gasket 1 1/2 Inch Trade Size FDA Compliant Silicone	0.010	6	784011928118	01	FDA compliant Silicone	1 1/2"
RSSOGSK6	Spare Gasket 2 Inch Trade Size FDA Compliant Silicone	0.038	6	784011928125	01	FDA compliant Silicone	2"



## Description

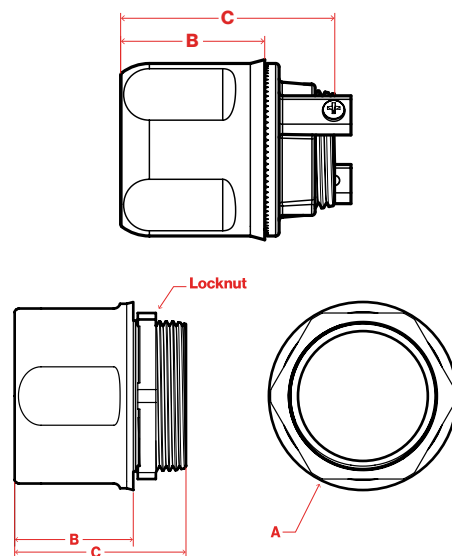
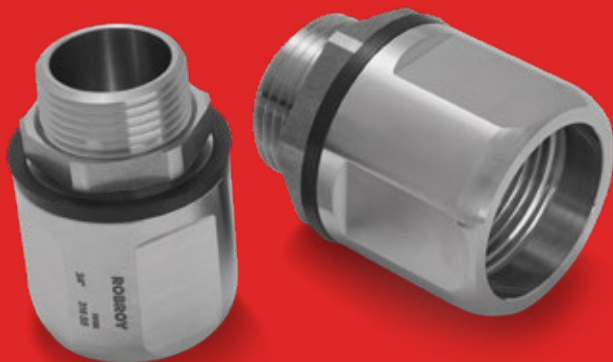
Robroy Stainless replacement covers and screw set for hygienic conduit bodies are cast and come with an FDA-compliant silicone gasket and sure stop hex screws, ensuring environmental rating of conduit body assembly.



Catalog No.	Description	Weight Each (lbs.)	A Overall Length (in.)	B Overall Height (in.)	C Overall Width (in.)
RSCC116H	Hygienic Conduit Body Cast Cover 1/2 Inch 316	0.36	4.91	0.42	1.50
RSCC216H	Hygienic Conduit Body Cast Cover 3/4 Inch 316	0.54	5.62	0.42	1.76
RSCC316H	Hygienic Conduit Body Cast Cover 1 Inch 316	0.78	6.65	0.45	2.06
RSCC416H	Hygienic Conduit Body Cast Cover 1-1/4 Inch 316	1.01	7.40	0.44	2.46
RSCC516H	Hygienic Conduit Body Cast Cover 1-1/2 Inch 316	1.38	8.46	0.68	2.74
RSCC616H	Hygienic Conduit Body Cast Cover 2 Inch 316	2.27	10.00	0.68	3.46

# Conduit Hubs

Stainless



## Description

Robroy Stainless Hubs are designed to connect threaded stainless steel conduit to a threadless opening in a box or an enclosure. Robroy Stainless Hubs are 316 stainless steel and are available with or without a ground nut. Robroy Stainless Hubs have a nitrile gasket. The use of Robroy Stainless conduit hubs (traditional and hygienic) can help meet the requirements for grounding. The use of Robroy Stainless grounding hubs (traditional and hygienic) can help meet the requirements for both grounding and bonding.

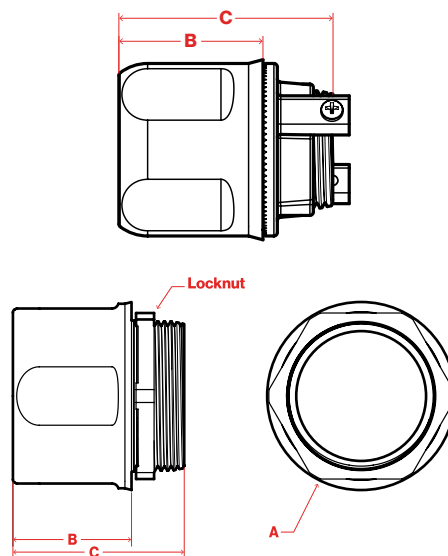
## Standards

- cULus Listed
- UL 514B (Conduit Hub)
- UL 467 (Grounding Hub)
- CSA C22.2 18.3-12
- CSA C22.2 No. 41-13
- TYPE 4X
- UL File Number: E200413
- UL File Number: E217890

Catalog No.	Description	Weight Each (lbs.)	A Outside Diameter (in.)	B Exterior Box Hub Length (in.)	C Overall Length (in.)
RSHUB116G	Grounding Hub 1/2 Inch 316	0.30	1.19	1.25	1.85
RSHUB216G	Grounding Hub 3/4 Inch 316	0.45	1.50	1.25	1.85
RSHUB316G	Grounding Hub 1 Inch 316	0.67	1.77	1.46	2.13
RSHUB416	Conduit Hub 1-1/4 Inch 316	0.83	2.15	1.62	2.75
RSHUB516	Conduit Hub 1-1/2 Inch 316	0.97	2.39	1.47	2.75
RSHUB616	Conduit Hub 2 Inch 316	1.65	3.00	1.82	3.00
RSHUB716	Conduit Hub 2-1/2 Inch 316	2.69	3.50	2.25	3.88
RSHUB816	Conduit Hub 3 Inch 316	4.05	4.25	2.17	4.13
RSHUB1016	Conduit Hub 4 Inch 316	5.93	5.25	2.72	4.50
RSHUB116G	Grounding Hub 1/2 Inch 316	0.30	1.19	1.25	1.85
RSHUB216G	Grounding Hub 3/4 Inch 316	0.45	1.5	1.25	1.85
RSHUB316G	Grounding Hub 1 Inch 316	0.67	1.77	1.46	2.13



## Hygienic



## Description

Robroy Stainless Hygienic Hubs are designed to connect threaded stainless steel conduit to a threadless opening in a box or an enclosure. Robroy Stainless Hygienic Hubs are 316 stainless steel and are available with or without ground nut. Robroy Stainless Hygienic Hubs have an FDA-compliant circular silicone conduit entry gasket. The use of Robroy Stainless conduit hubs (traditional and hygienic) can help meet the requirements for grounding. The use of Robroy Stainless grounding hubs (traditional and hygienic) can help meet the requirements for both grounding and bonding.

## Standards

- cULus Listed
- UL 514B (Conduit Hub)
- UL 467 (Grounding Hub)
- CSA C22.2 18.3-12
- CSA C22.2 No. 41-13
- TYPE 4X
- IP69/IP69K
- NSF/ANSI/3-A 14159-1
- UL File Number: E200413
- UL File Number: E217890

Catalog No.	Description	Weight Each (lbs.)	A Outside Diameter (in.)	B Exterior Box Hub Length (in.)	C Overall Length (in.)
RSHUB116GH	Hygienic Grounding Hub 1/2 Inch 316 with Conduit Entry Gasket	0.32	1.19	1.25	1.85
RSHUB216GH	Hygienic Grounding Hub 3/4 Inch 316 with Conduit Entry Gasket	0.48	1.50	1.25	1.85
RSHUB316GH	Hygienic Grounding Hub 1 Inch 316 with Conduit Entry Gasket	0.68	1.77	1.46	2.13
RSHUB416H	Hygienic Conduit Hub 1-1/4 Inch 316 with Conduit Entry Gasket	0.82	2.15	1.62	2.31
RSHUB516H	Hygienic Conduit Hub 1-1/2 Inch 316 with Conduit Entry Gasket	0.99	2.39	1.47	2.38
RSHUB616H	Hygienic Conduit Hub 2 Inch 316 with Conduit Entry Gasket	1.57	3.00	1.82	2.50
RSHUB116GH	Hygienic Grounding Hub 1/2 Inch 316 with Conduit Entry Gasket	0.32	1.19	1.25	1.85
RSHUB216GH	Hygienic Grounding Hub 3/4 Inch 316 with Conduit Entry Gasket	0.48	1.5	1.25	1.85
RSHUB316GH	Hygienic Grounding Hub 1 Inch 316 with Conduit Entry Gasket	0.68	1.77	1.46	2.13

# Device Boxes

Stainless



## Description

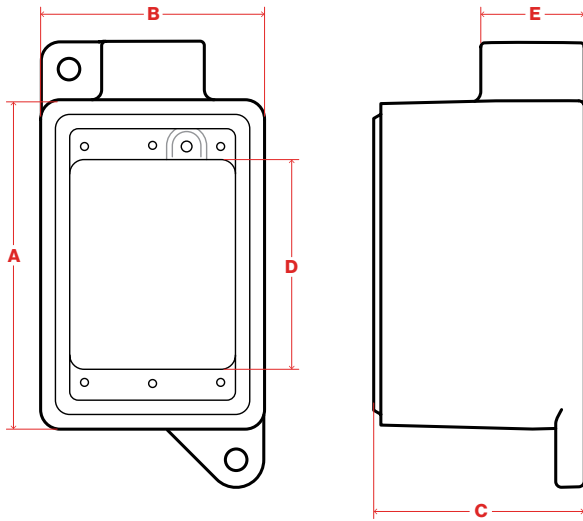
Robroy Stainless Device Boxes are 316 stainless steel and are used for wiring devices, such as switches and receptacles, act as pull boxes, and connect conduit. Deep-style device boxes are available in 3/4" NPT threaded hubs (single gang) or 1" NPT threaded hubs (two gang). Internal grounding screw is standard on all standard styles.

*Covers sold separately*

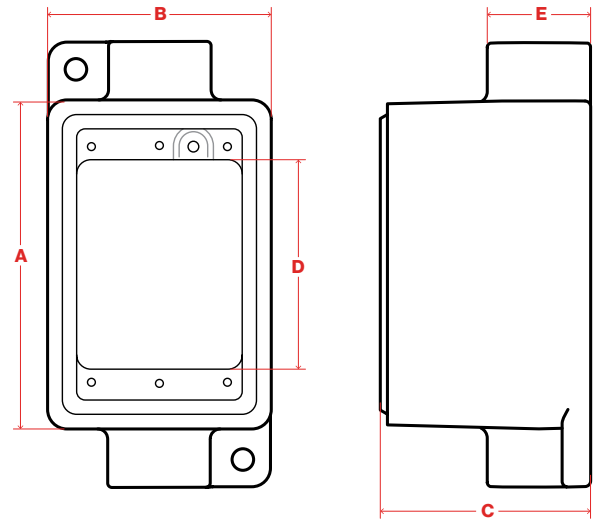
## Standards

- cULus Listed
- UL 514A
- C22.2 No. 18.1-13
- UL File Number: E231035

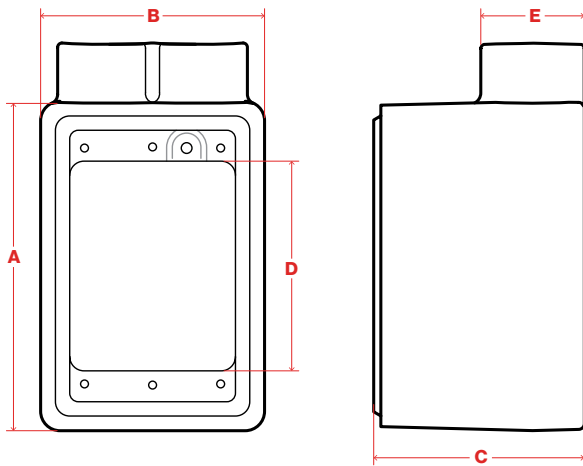
Catalog No.	Description	Weight Each (lbs.)	A Length (in.)	B Width (in.)	C Depth (in.)	D Opening Length (in.)	E Hub OD (in.)	Mounting Hole Diameter
RSFD1216	Single Gang Deep Device Box 3/4 Inch 316	3.01	4.56	3.09	2.9	2.93	1.43	0.30
RSFDC1216	Single Gang Deep Thru Feed C Device Box 3/4 Inch 316	3.13	4.56	3.09	2.9	2.93	1.43	0.30
RSFDS1216	Single Gang Deep S Device Box 3/4 Inch 316	2.90	4.56	3.09	2.9	2.93	1.43	—
RSFDX1216	Single Gang Deep X Device Box 3/4 Inch 316	3.37	4.56	3.09	2.9	2.93	1.43	—
RSFDA1216	Single Gang Deep A Device Box 3/4 Inch 316	2.80	4.56	3.09	3.69	2.93	1.43	—
RSFDC2316	Two Gang Deep Thru Feed C Device Box 1 Inch 316	4.62	4.56	4.78	2.9	2.93	1.43	0.30



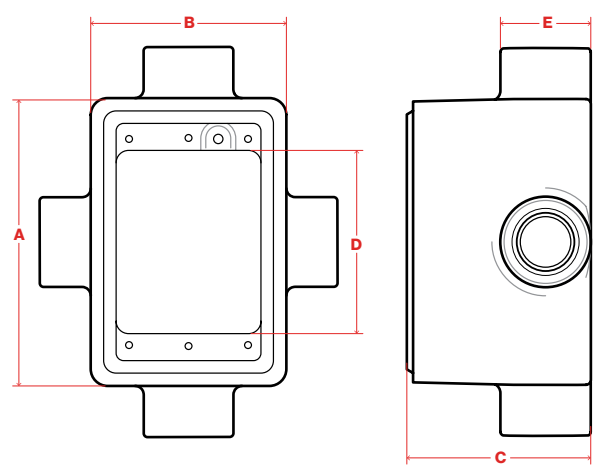
**FD • Single Gang Deep**



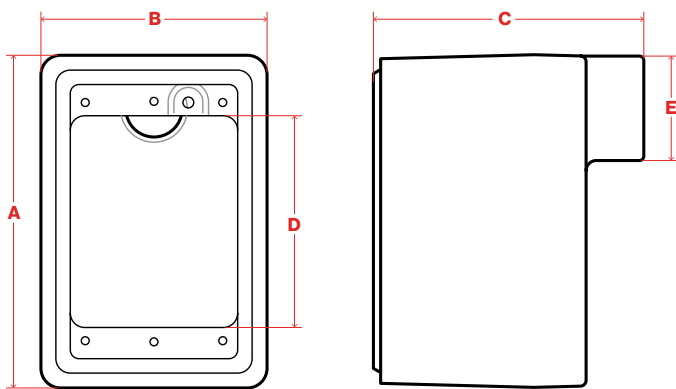
**FDC • Single Gang Deep Thru Feed C**



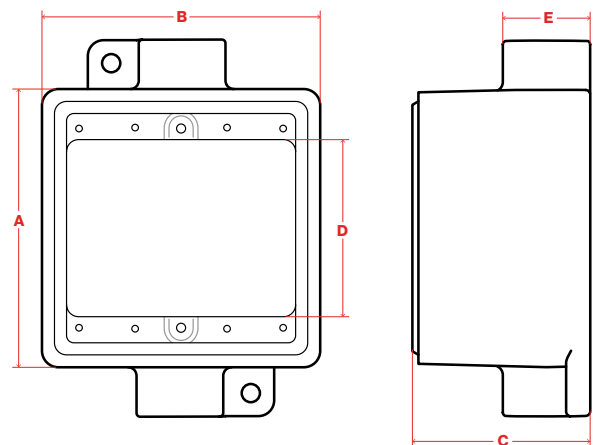
**FDS • Single Gang Deep S**



**FDX • Single Gang Deep X**



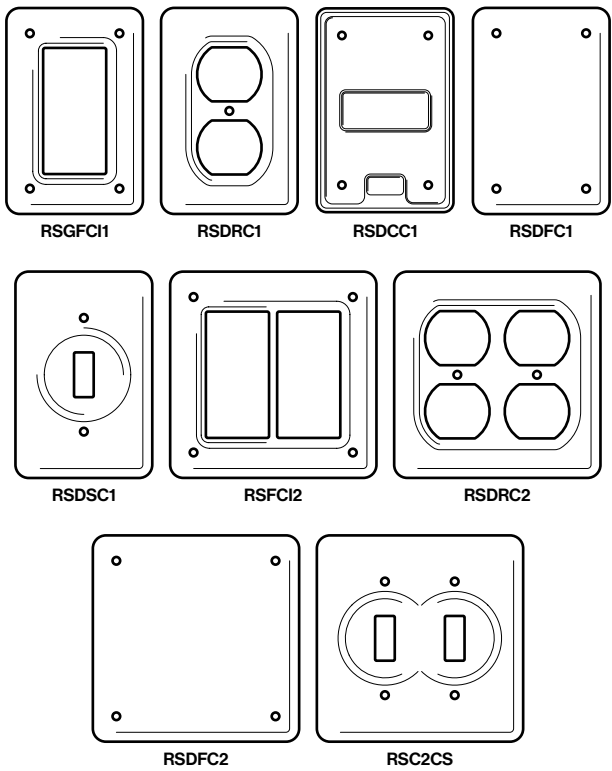
**FDA • Single Gang Deep A**



**FDC • Two Gang Deep Thru Feed C**

# Device Box Covers

Stainless



## Description

Robroy Stainless Device Box Covers are 316 stainless steel and are compatible with all Robroy Stainless Traditional Device Boxes. Covers are supplied with 316 stainless steel screws and a neoprene gasket.

## Standards

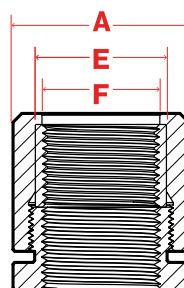
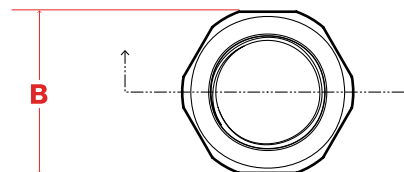
- cULus Listed
- UL 514A
- C22.2 No. 18.1-13
- UL File Number: E231035

Catalog No.	Description	Weight Each (lbs.)
RSDFC1	Single Gang Blank Formed Device Cover	0.26
RSDCC1	Single Gang Blank Cast Device Cover	0.58
RSDSC1	Single Gang Device Switch Cover	0.25
RSDRC1	Single Gang Device Receptacle Cover	0.21
RSGFC1	Single Gang Device GFCI Cover	0.2
* RSDRC2	Two Gang Two Duplex Receptacle Cover	0.352
* RSFC12	Two Gang Two GFCI Cover	0.33
* RSC2CS	Two Gang Two Switch Cover	0.44
* RSDFC2	Two Gang Blank Formed Cover	0.462

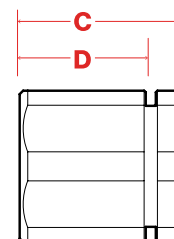
\* Not UL Listed

# 3 Piece Couplings

Stainless



Section A-A



## Description

Robroy Stainless Three Piece Couplings connect two pieces of stainless steel conduit when one piece of conduit cannot be turned. Robroy Stainless Three Piece Couplings are available in 316 stainless steel.

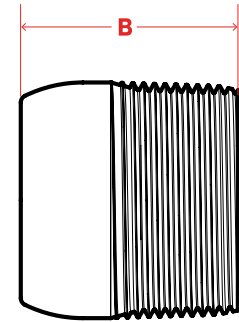
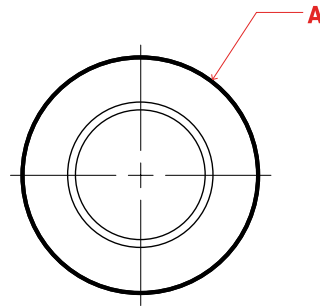
## Standards

- cULus Listed
- UL514B
- C22.2-18.3-12
- UL File Number E200413

Catalog No.	Description	Weight Each (lbs.)	A Max Outer Diameter (in.)	B Span (in.)	C Length (in.)	D Length Body (in.)	E Ring Diameter (in.)	F Inner Diameter (in.)
RS3PC216	Three Piece Coupling 3/4 Inch 316	0.50	1.55	1.47	1.51	1.25	1.22	1.08
RS3PC316	Three Piece Coupling 1 Inch 316	0.58	1.83	1.73	1.85	1.54	1.46	1.35

# Reducing Bushings

Stainless



## Description

Robroy Stainless Reducing Bushings reduce conduit hubs to a smaller size. They are 316 stainless steel and are provided with an integral bushing to prevent conductor damage and full, clean cut threads for ease of assembly.

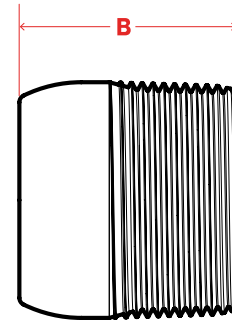
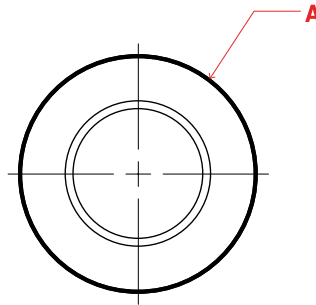
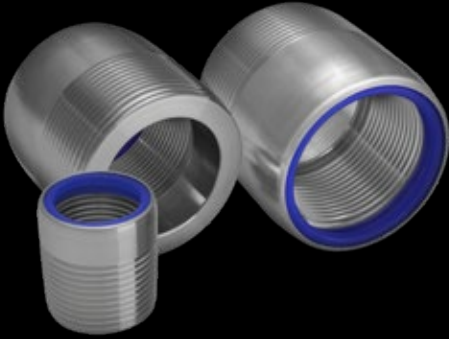
## Standards

- cULus Listed
- UL 514B
- CSA C22.2 No. 18.1-04
- TYPE 4X
- UL File Number: E200413

Catalog No.	Description	Weight Each (lbs.)	A Outside Diameter (in.)	B Overall Length (in.)
RSRE216	Reducing Bushing 3/4 Inch to 1/2 Inch 316	0.08	1.05	0.98
RSRE316	Reducing Bushing 1 Inch to 1/2 Inch 316	0.24	1.32	1.11
RSRE326	Reducing Bushing 1 Inch to 3/4 Inch 316	0.16	1.32	1.11
RSRE416	Reducing Bushing 1-1/4 Inch to 1/2 Inch 316	0.45	1.66	1.11
RSRE426	Reducing Bushing 1-1/4 Inch to 3/4 Inch 316	0.39	1.66	1.13
RSRE436	Reducing Bushing 1-1/4 Inch to 1 Inch 316	0.29	1.66	1.26
RSRE516	Reducing Bushing 1-1/2 Inch to 1/2 Inch 316	0.74	1.90	1.16
RSRE526	Reducing Bushing 1-1/2 Inch to 3/4 Inch 316	0.60	1.90	1.16
RSRE536	Reducing Bushing 1-1/2 Inch to 1 Inch 316	0.53	1.90	1.25
RSRE546	Reducing Bushing 1-1/2 Inch to 1-1/4 Inch 316	0.25	1.90	1.25
RSRE616	Reducing Bushing 2 Inch to 1/2 Inch 316	1.27	2.38	1.18
RSRE626	Reducing Bushing 2 Inch to 3/4 Inch 316	1.17	2.38	1.25
RSRE636	Reducing Bushing 2 Inch to 1 Inch 316	1.07	2.38	1.25
RSRE646	Reducing Bushing 2 Inch to 1-1/4 Inch 316	0.84	2.38	1.37
RSRE656	Reducing Bushing 2 Inch to 1-1/2 Inch 316	0.59	2.38	1.37
RSRE726	Reducing Bushing 2-1/2 Inch to 3/4 Inch 316	2.51	2.88	1.58
RSRE826	Reducing Bushing 3 Inch to 3/4 Inch 316	3.594	3.50	1.58
RSRE1026	Reducing Bushing 4 Inch to 3/4 Inch 316	5.79	4.50	1.58



## Hygienic



## Description

Robroy Stainless Hygienic Reducing Bushings reduce conduit hubs to a smaller size. They are made of 316 stainless steel and are specially designed for the hygienic system. They are provided with a circular conduit entry gasket made of FDA-compliant silicone at the female thread and an extended design on the male threads allowing for a sealed connection.

## Standards

- cULus Listed
- UL 514B
- CSA C22.2 No. 18.1-04
- TYPE 4X
- IP69/IP69K
- NSF/ANSI/3-A 14159-1
- UL File Number: E200413

Catalog No.	Description	Weight Each (lbs.)	A Outside Diameter (in.)	B Overall Length (in.)
RSRE216H	Hygienic Reducing Bushing 3/4 Inch to 1/2 Inch 316 with Conduit Entry Gasket	0.15	1.12	1.50
RSRE316H	Hygienic Reducing Bushing 1 Inch to 1/2 Inch 316 with Conduit Entry Gasket	0.30	1.32	1.44
RSRE326H	Hygienic Reducing Bushing 1 Inch to 3/4 Inch 316 with Conduit Entry Gasket	0.20	1.32	1.41
RSRE416H	Hygienic Reducing Bushing 1-1/4 Inch to 1/2 Inch 316 with Conduit Entry Gasket	0.69	1.66	1.50
RSRE426H	Hygienic Reducing Bushing 1-1/4 Inch to 3/4 Inch 316 with Conduit Entry Gasket	0.46	1.66	1.50
RSRE436H	Hygienic Reducing Bushing 1-1/4 Inch to 1 Inch 316 with Conduit Entry Gasket	0.33	1.66	1.20
RSRE516H	Hygienic Reducing Bushing 1-1/2 Inch to 1/2 Inch 316 with Conduit Entry Gasket	1.13	1.90	1.75
RSRE526H	Hygienic Reducing Bushing 1-1/2 Inch to 3/4 Inch 316 with Conduit Entry Gasket	0.74	1.90	1.75
RSRE536H	Hygienic Reducing Bushing 1-1/2 Inch to 1 Inch 316 with Conduit Entry Gasket	0.64	1.90	1.75
RSRE546H	Hygienic Reducing Bushing 1-1/2 Inch to 1-1/4 Inch 316 with Conduit Entry Gasket	0.43	2.00	2.00
RSRE616H	Hygienic Reducing Bushing 2 Inch to 1/2 Inch 316 with Conduit Entry Gasket	1.62	2.38	2.25
RSRE626H	Hygienic Reducing Bushing 2 Inch to 3/4 Inch 316 with Conduit Entry Gasket	1.53	2.38	2.25
RSRE636H	Hygienic Reducing Bushing 2 Inch to 1 Inch 316 with Conduit Entry Gasket	1.50	2.38	2.25
RSRE646H	Hygienic Reducing Bushing 2 Inch to 1-1/4 Inch 316 with Conduit Entry Gasket	1.24	2.38	2.25
RSRE656H	Hygienic Reducing Bushing 2 Inch to 1-1/2 Inch 316 with Conduit Entry Gasket	1.11	2.38	2.25



## Hygienic



### Description

Robroy Stainless Hygienic Liquid Tight Fittings are designed to terminate liquid tight flexible metallic conduit (LFMC) to a box or enclosure. The liquid tight conduit and fittings protect conductors from mechanical damage due to vibration and movement and seal out water, oils, coolants and other contaminants.

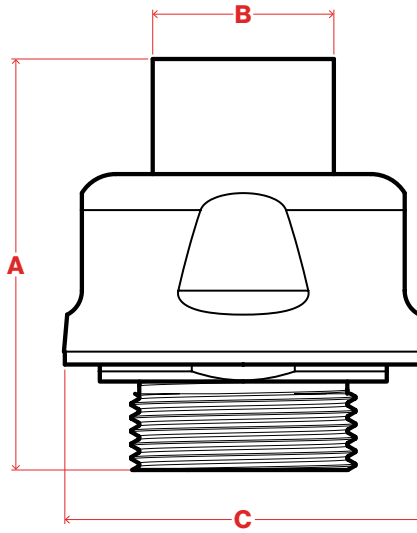
*Temp Range: -49°F to 221°F (-45°C to 105°C)*

### Standards

- cULus Listed
- UL 514B
- UL File Number: E234207
- NSF/ANSI 169
- IEC IP68 (with approved metallic conduit)

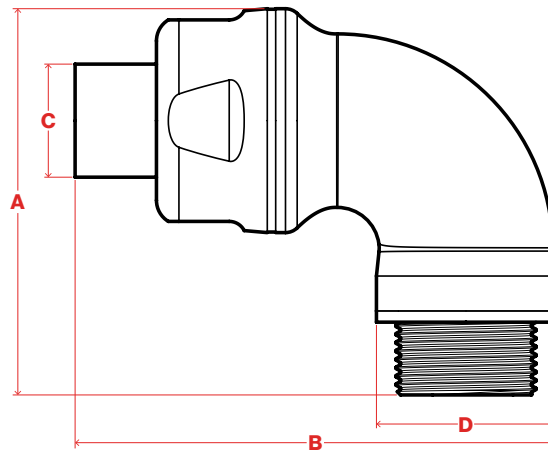






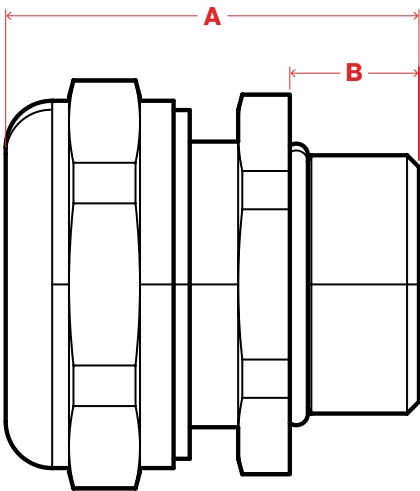
## Straight

Catalog No.	Description	Weight Each (lbs.)	A Overall Length (in.)	B Width of Opening (in.)	C Outside Diameter (in.)
RSLQT116H	Hygienic Liquid Tight Straight 1/2 Inch 316	0.176	1.77	0.59	1.18
RSLQT216H	Hygienic Liquid Tight Straight 3/4 Inch 316	0.261	1.81	0.71	1.42
RSLQT316H	Hygienic Liquid Tight Straight 1 Inch 316	0.503	2.09	0.87	1.73
RSLQT416H	Hygienic Liquid Tight Straight 1-1/4 Inch 316	0.754	2.13	1.02	2.09
RSLQT516H	Hygienic Liquid Tight Straight 1-1/2 Inch 316	0.851	2.32	1.18	2.36
RSLQT616H	Hygienic Liquid Tight Straight 2 Inch 316	1.69	2.52	1.42	2.83



## 90°

Catalog No.	Description	Weight Each (lbs.)	A Overall Height (in.)	B Overall Length (in.)	C Ferrule Outside Diameter (in.)	D Outside Diameter (in.)
RSLQT9116H	Hygienic Liquid Tight 90 1/2 Inch 316	0.373	2.24	3.36	0.52	1.06
RSLQT9216H	Hygienic Liquid Tight 90 3/4 Inch 316	0.571	2.44	3.70	0.52	1.26
RSLQT9316H	Hygienic Liquid Tight 90 1 Inch 316	0.948	2.87	4.21	0.6	1.65
RSLQT9416H	Hygienic Liquid Tight 90 1-1/4 Inch 316	1.31	3.31	4.76	0.64	1.97



Description

Robroy Stainless Traditional Liquid Tight Fittings are used to connect and terminate liquid tight flexible metallic conduit (LFMC) to a box or enclosure. The liquid tight conduit and fittings protect conductors from mechanical damage due to vibration and movement and seal out water, oils, coolants and other contaminants. The traditional liquid tight fitting offers a unique low profile design - 20% smaller and 35% lighter than other designs - making it ideal for applications where space is limited. It is approved for both exposed and concealed locations. The 316 stainless steel construction provides the highest resistance to rust and corrosion and provides long dependable service in tough, industrial and wet locations. Available in 1/2" to 2" in straight, 45° and 90° configurations to meet customer requirements.

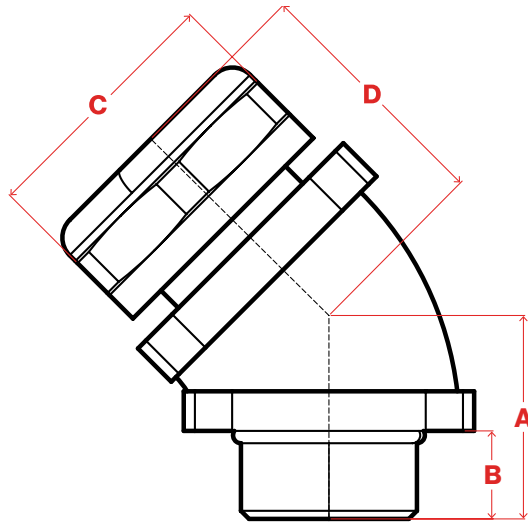
Temp Range: -49°F to 221°F (-45°C to 105°C)

Standards

- cULus Listed
- UL 514B
- UL File Number: E234207
- IEC IP66/IP67 (with approved metallic conduit)

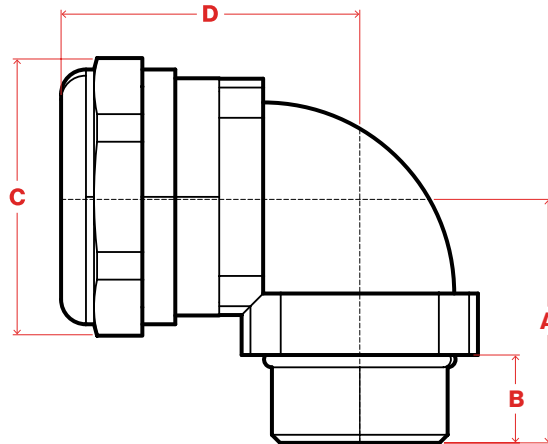
Straight

Catalog No.	Description	Weight Each (lbs.)	A Overall Height (in.)	B Overall Length (in.)
RSLQT116	Liquid Tight Straight 1/2 Inch 316	0.121	1.388	0.472
RSLQT216	Liquid Tight Straight 3/4 Inch 316	0.172	1.378	0.472
RSLQT316	Liquid Tight Straight 1 Inch 316	0.306	1.456	0.511
RSLQT416	Liquid Tight Straight 1-1/4 Inch 316	0.41	1.653	0.59
RSLQT516	Liquid Tight Straight 1-1/2 Inch 316	0.617	1.889	0.63
RSLQT616	Liquid Tight Straight 2 Inch 316	0.97	2.126	0.748



**45°**

Catalog No.	Description	Weight Each (lbs.)	A Overall Height (in.)	B Overall Length (in.)	C Ferrule Outside Diameter (in.)	D Outside Diameter (in.)
RSLQT4116	Liquid Tight 45° 1/2 Inch 316	0.223	0.984	0.551	1.244	1.181
RSLQT4216	Liquid Tight 45° 3/4 Inch 316	0.368	1.063	0.551	1.504	1.299
RSLQT4316	Liquid Tight 45° 1 Inch 316	0.653	1.26	0.63	1.949	1.496
RSLQT4416	Liquid Tight 45° 1-1/4 Inch 316	0.952	1.417	0.63	2.086	1.535
RSLQT4516	Liquid Tight 45° 1-1/2 Inch 316	1.312	1.535	0.709	2.441	1.811
RSLQT4616	Liquid Tight 45° 2 Inch 316	2.064	1.732	0.787	2.992	2.087



**90°**

Catalog No.	Description	Weight Each (lbs.)	A Overall Height (in.)	B Overall Length (in.)	C Ferrule Outside Diameter (in.)	D Outside Diameter (in.)
RSLQT9116	Liquid Tight 90° 1/2 Inch 316	0.223	1.181	0.472	1.141	1.388
RSLQT9216	Liquid Tight 90° 3/4 Inch 316	0.368	1.338	0.472	1.378	1.574
RSLQT9316	Liquid Tight 90° 1 Inch 316	0.653	1.614	0.511	1.771	1.929
RSLQT9416	Liquid Tight 90° 1-1/4 Inch 316	0.952	1.811	0.511	2.086	1.968
RSLQT9516	Liquid Tight 90° 1-1/2 Inch 316	1.312	2.204	0.511	2.441	2.244
RSLQT9616	Liquid Tight 90° 2 Inch 316	2.064	2.441	0.63	2.992	2.677



Hygienic

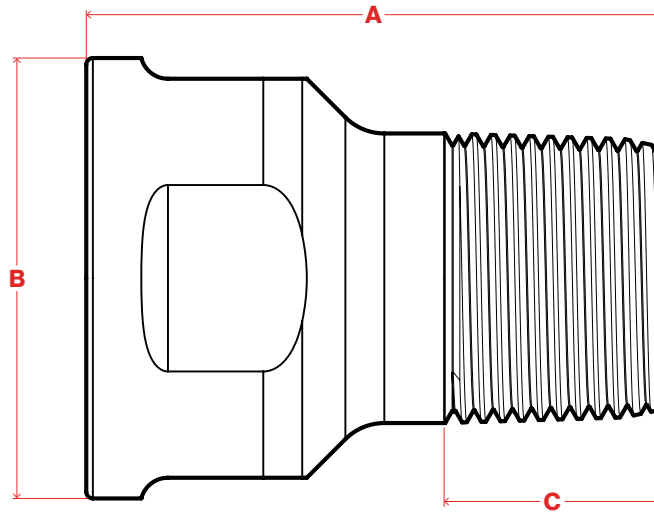


## Description

Robroy Stainless Liquid Tight Transition Adapters are used when transitioning from liquid tight metallic flexible conduit (LMFC) to stainless rigid conduit. Using a transition adapter maintains the environmental integrity of the raceway system. The 316 stainless steel construction provides superior corrosion resistance and strength. Available in trade sizes 1/2" to 2".

## Standards

- NSF/ANSI/3-A 14159-1



Catalog No.	Description	Weight Each (lbs.)	A Overall Length (in.)	B Height (in.)	C Thread Length (in.)
RSTRA116H	Hygienic Transition Adapter 1/2 Inch 316	0.34	2.28	1.5	0.78
RSTRA216H	Hygienic Transition Adapter 3/4 Inch 316	0.49	2.31	1.75	0.79
RSTRS316H	Hygienic Transition Adapter 1 Inch 316	0.71	2.61	2	0.9
RSTRA416H	Hygienic Transition Adapter 1-1/4 Inch 316	1.05	2.88	2.38	1
RSTRA516H	Hygienic Transition Adapter 1-1/2 Inch 316	1.39	3.03	2.75	1.03
RSTRA616H	Hygienic Transition Adapter 2 Inch 316	2.13	3.18	3.38	1.06

# LT Flexible Metallic Conduit - Galvanized Core

Stainless



## Description

Robroy Stainless Liquid Tight Flexible Metallic Conduit is designed for use with liquid tight connectors. Robroy Stainless Liquid Tight Flexible Metallic Conduit is coated with an FDA-compliant thermoplastic PVC antimicrobial jacket and can be used in wet or dry locations and is available with a galvanized core for splash zones.

## Standards

- cULus Listed
- UL 360
- NSF/ANSI 169
- UL File Number: E514740

Catalog No.	Description	Weight Per 100 Feet (lbs.)	Overall Length (ft.)	Outside Diameter (in.) Min-Max
RSFGLFMCGS-038	Liquid Tight Flexible Metallic Conduit 3/8 Inch Galvanized Core	25	100	.690-.710
RSFGLFMCGS-050	Liquid Tight Flexible Metallic Conduit 1/2 Inch Galvanized Core	29	100	.822-.840
RSFGLFMCGS-075	Liquid Tight Flexible Metallic Conduit 3/4 Inch Galvanized Core	44	100	1.030-1.050
RSFGLFMCGS-100	Liquid Tight Flexible Metallic Conduit 1 Inch Galvanized Core	73	100	1.290-1.315
RSFGLFMCGS-125	Liquid Tight Flexible Metallic Conduit 1-1/4 Inch Galvanized Core	100	50	1.630-1.660
RSFGLFMCGS-150	Liquid Tight Flexible Metallic Conduit 1-1/2 Inch Galvanized Core	112	50	1.865-1.900
RSFGLFMCGS-200	Liquid Tight Flexible Metallic Conduit 2 Inch Galvanized Core	148	50	2.340-2.375

*Available in standard lengths only, not available to order "cut to length"*

# LT Flexible Metallic Conduit - Stainless Core

Stainless



## Description

Robroy Stainless Liquid Tight Flexible Metallic Conduit is designed for use with liquid tight connectors. Robroy Stainless Liquid Tight Flexible Metallic Conduit is coated with an FDA-compliant thermoplastic PVC antimicrobial jacket and can be used in wet or dry locations and is available with a stainless core for food zones.

## Standards

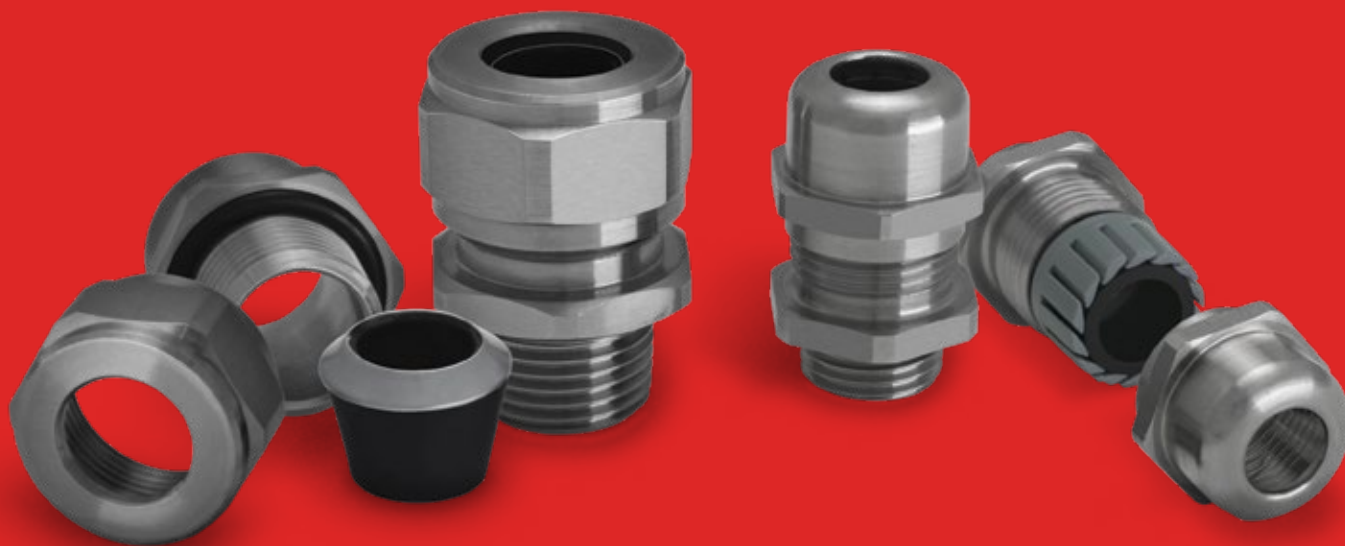
- NSF/ANSI 169

Catalog No.	Description	Weight Per 100 Feet (lbs.)	Overall Length (ft.)	Outside Diameter (in.) Min-Max
RSFGLMCSS-038	Liquid Tight Flexible Metallic Conduit 3/8 Inch Stainless Core	21	100	.690-.710
RSFGLMCSS-050	Liquid Tight Flexible Metallic Conduit 1/2 Inch Stainless Core	25	100	.822-.840
RSFGLMCSS-075	Liquid Tight Flexible Metallic Conduit 3/4 Inch Stainless Core	39	100	1.030-1.050
RSFGLMCSS-100	Liquid Tight Flexible Metallic Conduit 1 Inch Stainless Core	51	100	1.290-1.315
RSFGLMCSS-125	Liquid Tight Flexible Metallic Conduit 1-1/4 Inch Stainless Core	66	50	1.630-1.660
RSFGLMCSS-150	Liquid Tight Flexible Metallic Conduit 1-1/2 Inch Stainless Core	104	50	1.865-1.900
RSFGLMCSS-200	Liquid Tight Flexible Metallic Conduit 2 Inch Stainless Core	136	50	2.340-2.375

*Available in standard lengths only, not available to order "cut to length"*

# Cord Grips

Stainless



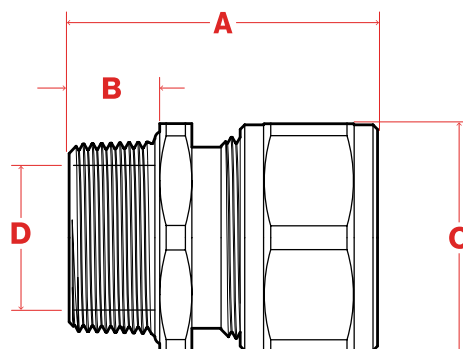
## Description

Robroy Stainless Cord Grips are 304 stainless steel and are designed to eliminate pull tension on terminals, control cable arc-of-bend, prevent cord pull-out and provide a liquid-tight seal. All connectors can be ordered with or without wire mesh attachments and accommodate knockout sizes from 1/2" to 2".

## Standards

- cULus Listed
- UL 514B
- UL File Number: E511845



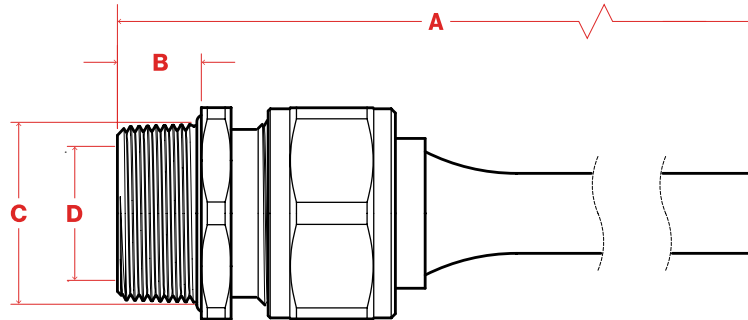


## Cord Grips

Catalog No.	Description	Weight Each (lbs.)	A Overall Length (in.)	B Thread Length (in.)	C Width Across Flats (in.)	D Inner Diameter (in.)	Max Outer Diameter (in.)
RSCG104125188	Cord Grip 1/2 Inch 304 Cable Range .125 to .188	0.22	1.74	0.56	1.13	0.61	1.25
RSCG104188250	Cord Grip 1/2 Inch 304 Cable Range .188 to .250	0.21	1.64	0.56	1.12	0.61	1.24
RSCG104250312	Cord Grip 1/2 Inch 304 Cable Range .250 to .312	0.21	1.64	0.56	1.12	0.61	1.24
RSCG104312375	Cord Grip 1/2 Inch 304 Cable Range .312 to .375	0.21	1.64	0.56	1.12	0.61	1.24
RSCG104375438	Cord Grip 1/2 Inch 304 Cable Range .375 to .438	0.21	1.64	0.56	1.12	0.61	1.24
RSCG104438500	Cord Grip 1/2 Inch 304 Cable Range .438 to .500	0.20	1.64	0.56	1.12	0.61	1.24
RSCG104500562	Cord Grip 1/2 Inch 304 Cable Range .500 to .562	0.20	1.64	0.56	1.12	0.61	1.24
RSCG104562625	Cord Grip 1/2 Inch 304 Cable Range .562 to .625	0.20	1.64	0.56	1.12	0.61	1.24
RSCG204438500	Cord Grip 3/4 Inch 304 Cable Range .438 to .500	0.34	2.07	0.57	1.38	0.81	1.50
RSCG204500562	Cord Grip 3/4 Inch 304 Cable Range .500 to .562	0.34	2.07	0.57	1.38	0.81	1.50
RSCG204562625	Cord Grip 3/4 Inch 304 Cable Range .562 to .625	0.33	2.07	0.57	1.38	0.81	1.50
RSCG204568688	Cord Grip 3/4 Inch 304 Cable Range .568 to .688	0.33	2.07	0.57	1.38	0.81	1.50
RSCG204625750	Cord Grip 3/4 Inch 304 Cable Range .625 to .750	0.33	2.07	0.57	1.38	0.81	1.50
RSCG204688812	Cord Grip 3/4 Inch 304 Cable Range .688 to .812	0.32	2.07	0.57	1.38	0.81	1.50
RSCG304500562	Cord Grip 1 Inch 304 Cable Range .500 to .562	0.45	2.09	0.62	1.56	0.99	1.72
RSCG304562625	Cord Grip 1 Inch 304 Cable Range .562 to .625	0.45	2.09	0.62	1.56	0.99	1.72
RSCG304568688	Cord Grip 1 Inch 304 Cable Range .568 to .688	0.45	2.09	0.62	1.56	0.99	1.72
RSCG304625750	Cord Grip 1 Inch 304 Cable Range .625 to .750	0.45	2.09	0.62	1.56	0.99	1.72
RSCG304688812	Cord Grip 1 Inch 304 Cable Range .688 to .812	0.44	2.09	0.62	1.56	0.99	1.72
RSCG304750875	Cord Grip 1 Inch 304 Cable Range .750 to .875	0.44	2.09	0.62	1.56	0.99	1.72
RSCG304812938	Cord Grip 1 Inch 304 Cable Range .812 to .938	0.43	2.09	0.62	1.56	0.99	1.72
RSCG304875100	Cord Grip 1 Inch 304 Cable Range .875 to 1.00	0.44	2.11	0.62	1.56	0.99	1.72
RSCG404568688	Cord Grip 1-1/4 Inch 304 Cable Range .568 to .688	1.14	2.62	0.69	2.25	1.32	2.48
RSCG404688812	Cord Grip 1-1/4 Inch 304 Cable Range .688 to .812	1.14	2.62	0.69	2.25	1.32	2.48
RSCG404750875	Cord Grip 1-1/4 Inch 304 Cable Range .750 to .875	1.14	2.62	0.69	2.25	1.32	2.48
RSCG404875100	Cord Grip 1-1/4 Inch 304 Cable Range .875 to 1.00	1.13	2.62	0.69	2.25	1.32	2.48
RSCG4041001125	Cord Grip 1-1/4 Inch 304 Cable Range 1.00 to 1.125	1.12	2.62	0.69	2.25	1.32	2.48
RSCG4041125125	Cord Grip 1-1/4 Inch 304 Cable Range 1.125 to 1.25	1.10	2.62	0.69	2.25	1.32	2.48
RSCG4041251375	Cord Grip 1-1/4 Inch 304 Cable Range 1.25 to 1.375	1.09	2.62	0.69	2.25	1.32	2.48

## Cord Grips (Cont.)

Catalog No.	Description	Weight Each (lbs.)	A Overall Length (in.)	B Thread Length (in.)	C Width Across Flats (in.)	D Inner Diameter (in.)	Max Outer Diameter (in.)
RSCG504568688	Cord Grip 1-1/2 Inch 304 Cable Range .568 to .688	1.29	2.62	0.69	2.25	1.44	2.48
RSCG5045750875	Cord Grip 1-1/2 Inch 304 Cable Range .750 to .875	1.28	2.63	0.69	2.25	1.44	2.48
RSCG5045875100	Cord Grip 1-1/2 Inch 304 Cable Range .875 to 1.00	1.27	2.63	0.69	2.25	1.44	2.48
RSCG5041001125	Cord Grip 1-1/2 Inch 304 Cable Range 1.00 to 1.125	1.26	2.63	0.69	2.25	1.44	2.48
RSCG5041125125	Cord Grip 1-1/2 Inch 304 Cable Range 1.125 to 1.25	1.25	2.63	0.69	2.25	1.44	2.48
RSCG5041251375	Cord Grip 1-1/2 Inch 304 Cable Range 1.25 to 1.375	1.23	2.63	0.69	2.25	1.44	2.48
RSCG60461251375	Cord Grip 2 Inch 304 Cable Range 1.25 to 1.375 Size 6	2.12	2.63	0.69	2.25	1.44	2.48
RSCG604614381562	Cord Grip 2 Inch 304 Cable Range 1.438 to 1.562 Size 6	2.08	2.63	0.69	2.25	1.44	2.48
RSCG604615621688	Cord Grip 2 Inch 304 Cable Range 1.562 to 1.688 Size 6	2.06	2.63	0.69	2.25	1.44	2.48
RSCG604616881812	Cord Grip 2 Inch 304 Cable Range 1.688 to 1.812 Size 6	2.03	3.46	0.80	2.83	2.00	2.98
RSCG604716881812	Cord Grip 2 Inch 304 Cable Range 1.688 to 1.812 Size 7	4.49	3.46	0.80	2.83	2.00	2.98
RSCG604718121938	Cord Grip 2 Inch 304 Cable Range 1.812 to 1.938 Size 7	4.47	4.25	0.80	3.79	1.90	3.97
RSCG604719382062	Cord Grip 2 Inch 304 Cable Range 1.938 to 2.062 Size 7	4.44	4.25	0.80	3.79	1.90	3.97
RSCG604720622188	Cord Grip 2 Inch 304 Cable Range 2.062 to 2.188 Size 7	4.40	4.25	0.80	3.79	1.90	3.97
RSCG604721882312	Cord Grip 2 Inch 304 Cable Range 2.188 to 2.312 Size 7	4.36	4.25	0.80	3.79	1.90	3.97
RSCG604723122438	Cord Grip 2 Inch 304 Cable Range 2.312 to 2.438 Size 7	5.80	3.76	0.80	3.75	1.90	3.95



## Cord Grips With Mesh

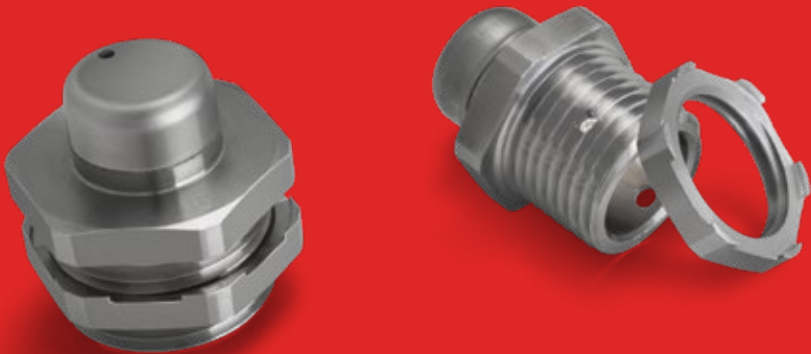
Catalog No.	Description	Weight Each (lbs.)	A Overall Length (in.)	B Thread Length (in.)	C Width Across Flats (in.)	D Inner Diameter (in.)	Max Outer Diameter (in.)
RSCGM104188250	Cord Grip 1/2 Inch 304 Cable Range .188 to .250 with Mesh	0.23	6.49	0.56	1.12	0.61	1.24
RSCGM104250312	Cord Grip 1/2 Inch 304 Cable Range .250 to .312 with Mesh	0.24	6.49	0.56	1.12	0.61	1.24
RSCGM104312375	Cord Grip 1/2 Inch 304 Cable Range .312 to .375 with Mesh	0.24	6.49	0.56	1.12	0.61	1.24
RSCGM104375438	Cord Grip 1/2 Inch 304 Cable Range .375 to .438 with Mesh	0.25	6.49	0.56	1.12	0.61	1.24
RSCGM104438500	Cord Grip 1/2 Inch 304 Cable Range .438 to .500 with Mesh	0.24	6.49	0.56	1.12	0.61	1.24

## Cord Grips With Mesh (Cont.)

Catalog No.	Description	Weight Each (lbs.)	A Overall Length (in.)	B Thread Length (in.)	C Width Across Flats (in.)	D Inner Diameter (in.)	Max Outer Diameter (in.)
RSCGM104500562	Cord Grip 1/2 Inch 304 Cable Range .500 to .562 with Mesh	0.24	6.49	0.56	1.12	0.61	1.24
RSCGM104562625	Cord Grip 1/2 Inch 304 Cable Range .562 to .625 with Mesh	0.24	6.49	0.56	1.12	0.61	1.24
RSCGM204438500	Cord Grip 3/4 Inch 304 Cable Range .438 to .500 with Mesh	0.37	9.21	0.57	1.38	0.81	1.50
RSCGM204500562	Cord Grip 3/4 Inch 304 Cable Range .500 to .562 with Mesh	0.37	9.21	0.57	1.38	0.81	1.50
RSCGM204562625	Cord Grip 3/4 Inch 304 Cable Range .562 to .625 with Mesh	0.36	9.21	0.57	1.38	0.81	1.50
RSCGM204568688	Cord Grip 3/4 Inch 304 Cable Range .568 to .688 with Mesh	0.39	9.21	0.57	1.38	0.81	1.50
RSCGM204625750	Cord Grip 3/4 Inch 304 Cable Range .625 to .750 with Mesh	0.38	9.21	0.57	1.38	0.81	1.50
RSCGM204688812	Cord Grip 3/4 Inch 304 Cable Range .688 to .812 with Mesh	0.37	9.21	0.57	1.38	0.81	1.50
RSCGM304500562	Cord Grip 1 Inch 304 Cable Range .500 to .562 with Mesh	0.52	9.29	0.62	1.56	0.99	1.72
RSCGM304562625	Cord Grip 1 Inch 304 Cable Range .562 to .625 with Mesh	0.52	9.29	0.62	1.56	0.99	1.72
RSCGM304568688	Cord Grip 1 Inch 304 Cable Range .568 to .688 with Mesh	0.52	9.29	0.62	1.56	0.99	1.72
RSCGM304625750	Cord Grip 1 Inch 304 Cable Range .625 to .750 with Mesh	0.52	9.29	0.62	1.56	0.99	1.72
RSCGM304688812	Cord Grip 1 Inch 304 Cable Range .688 to .812 with Mesh	0.49	9.29	0.62	1.56	0.99	1.72
RSCGM304750875	Cord Grip 1 Inch 304 Cable Range .750 to .875 with Mesh	0.49	9.29	0.62	1.56	0.99	1.72
RSCGM304812938	Cord Grip 1 Inch 304 Cable Range .812 to .938 with Mesh	0.50	9.29	0.62	1.56	0.99	1.72
RSCGM304875100	Cord Grip 1 Inch 304 Cable Range .875 to 1.00 with Mesh	0.51	9.29	0.62	1.56	0.99	1.72
RSCGM404750875	Cord Grip 1-1/4 Inch 304 Cable Range .750 to .875 with Mesh	1.29	15.00	0.69	2.25	1.32	2.48
RSCGM404875100	Cord Grip 1-1/4 Inch 304 Cable Range .875 to 1.00 with Mesh	1.29	15.00	0.69	2.25	1.32	2.48
RSCGM4041001125	Cord Grip 1-1/4 Inch 304 Cable Range 1.00 to 1.125 with Mesh	1.29	15.00	0.69	2.25	1.32	2.48
RSCGM4041125125	Cord Grip 1-1/4 Inch 304 Cable Range 1.125 to 1.25 with Mesh	1.29	15.00	0.69	2.25	1.32	2.48
RSCGM4041251375	Cord Grip 1-1/4 Inch 304 Cable Range 1.25 to 1.375 with Mesh	1.28	15.00	0.69	2.25	1.32	2.48
RSCGM5045750875	Cord Grip 1-1/2 Inch 304 Cable Range .750 to .875 with Mesh	1.41	13.17	0.69	2.25	1.44	2.48
RSCGM5045875100	Cord Grip 1-1/2 Inch 304 Cable Range .875 to 1.00 with Mesh	1.41	13.17	0.69	2.25	1.44	2.48
RSCGM5041001125	Cord Grip 1-1/2 Inch 304 Cable Range 1.00 to 1.125 with Mesh	1.42	13.17	0.69	2.25	1.44	2.48
RSCGM5041125125	Cord Grip 1-1/2 Inch 304 Cable Range 1.125 to 1.25 with Mesh	1.40	13.17	0.69	2.25	1.44	2.48
RSCGM5041251375	Cord Grip 1-1/2 Inch 304 Cable Range 1.25 to 1.375 with Mesh	1.41	13.17	0.69	2.25	1.44	2.48
RSCGM60461251375	Cord Grip 2 Inch 304 Cable Range 1.25 to 1.375 Size 6 with Mesh	2.42	17.79	0.80	2.83	2.00	2.98
RSCGM604614381562	Cord Grip 2 Inch 304 Cable Range 1.438 to 1.562 Size 6 with Mesh	2.38	17.79	0.80	2.83	2.00	2.98
RSCGM604615621688	Cord Grip 2 Inch 304 Cable Range 1.562 to 1.688 Size 6 with Mesh	2.28	17.79	0.80	2.83	2.00	2.98
RSCGM604616881812	Cord Grip 2 Inch 304 Cable Range 1.688 to 1.812 Size 6 with Mesh	2.15	17.79	0.80	2.83	2.00	2.98
RSCGM604716881812	Cord Grip 2 Inch 304 Cable Range 1.688 to 1.812 Size 7 with Mesh	5.70	23.58	0.80	3.79	1.90	3.97
RSCGM604718121938	Cord Grip 2 Inch 304 Cable Range 1.812 to 1.938 Size 7 with Mesh	5.66	23.58	0.80	3.79	1.90	3.97
RSCGM604719382062	Cord Grip 2 Inch 304 Cable Range 1.938 to 2.062 Size 7 with Mesh	5.63	23.58	0.80	3.79	1.90	3.97
RSCGM604720622188	Cord Grip 2 Inch 304 Cable Range 2.062 to 2.188 Size 7 with Mesh	5.59	23.58	0.80	3.79	1.90	3.97
RSCGM604721882312	Cord Grip 2 Inch 304 Cable Range 2.188 to 2.312 Size 7 with Mesh	5.56	23.58	0.80	3.79	1.90	3.97
RSCGM604723122438	Cord Grip 2 Inch 304 Cable Range 2.312 to 2.438 Size 7 with Mesh	7.00	23.58	0.80	3.75	1.90	3.95

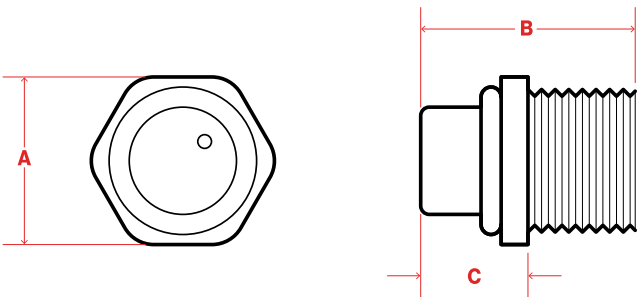
# Drain Plugs

Stainless

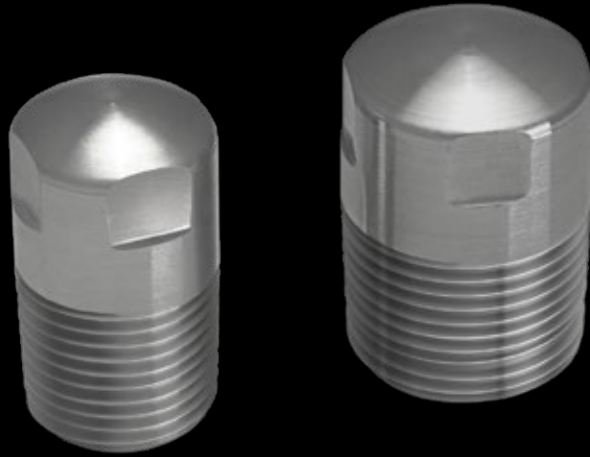


## Description

Robroy Stainless Drain Plugs allow for an easy method to drain an assembly reducing accumulation of water, fluids and condensation. Locknut included as standard.



Catalog No.	Description	Weight Each (lbs.)	A Width Across Flats (in.)	B Length (in.)	C Outside Length (in.)
RSDP116	Drain Plug 1/2 Inch 316	0.11	0.98	1.26	0.63
RSDP216	Drain Plug 3/4 Inch 316	0.16	1.18	1.26	0.63



## Description

Robroy Stainless Hygienic Plugs are 316 stainless steel and are specially designed for the hygienic system. These can be used in conjunction with hygienic reducers to accommodate larger trade sizes. Plugs are also listed for hazardous locations.

## Standards

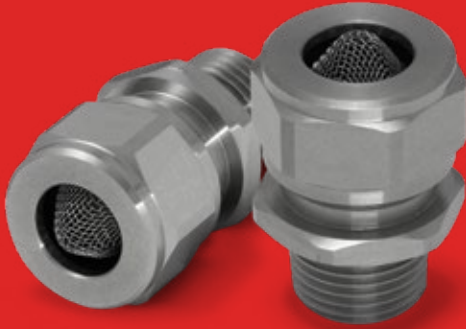
- cULus Listed
- UL 1203
- CSA 22.2 No. 25-17
- CSA 22.2 No. 30
- UL File Number: E476062
- Class I, Div 1 Grp A,B,C,D
- Class II, Div 1 Grp E, F, G

Catalog No.	Description	Weight Each (lbs.)	Overall Length (in.)	Outside Diameter (in.)
RSPLG116	Hygienic Plug 1/2 Inch 316	0.21	1.50	0.84
RSPLG216	Hygienic Plug 3/4 Inch 316	0.33	1.50	1.05

# Basket Drains

# Low Point Drains

Stainless



## Description

Robroy Stainless Basket Drains are 304 stainless steel and are designed to provide means for the release of condensation within a conduit system.

## Standards

- cULus Listed
- UL 514B
- UL File Number: E511845

Catalog No.	Description	Weight Each (lbs.)
RSBDR104	Basket Drain 1/2 Inch 304	0.08
RSBDR204	Basket Drain 3/4 Inch 304	0.18

## Description

Robroy Stainless Low Point Drains are designed to be used in connection with Robroy Stainless conduit bodies and provide an exit point for water or accumulated condensation in electrical raceway systems. The sleek, rounded construction adheres with hygienic design principles. The low point drain is available in 1/2", 3/4" & 1" trade sizes and is produced from corrosion resistant 316 grade stainless steel.

## Standards

- cULus Listed
- UL 514A
- UL File number E511845
- CSA C22.2 No. 18-1

Catalog No.	Description	Weight Each (lbs.)
RSLPD116	Low Point Drain 1/2 Inch 316	0.11
RSLPD216	Low Point Drain 3/4 Inch 316	0.16
RSLPD316	Low Point Drain 1 Inch 316	0.21

# One Hole Straps

# Two Hole Straps

Stainless



## Description

Robroy Stainless One Hole Straps are made from 316 stainless steel and are used to secure rigid or PVC-coated conduit to a wall or other types of supports.

## Standards

- cULus Listed
- UL 2239
- UL File Number: E216996

Catalog No.	Description	Weight Each (lbs.)	Trade Size
RS1HS116	One Hole Strap 1/2 Inch 316	0.03	1/2"
RS1HS216	One Hole Strap 3/4 Inch 316	0.05	3/4"
RS1HS316	One Hole Strap 1 Inch 316	0.06	1"
RS1HS416	One Hole Strap 1-1/4 Inch 316	0.08	1-1/4"
RS1HS516	One Hole Strap 1-1/2 Inch 316	0.16	1-1/2"
RS1HS616	One Hole Strap 2 Inch 316	0.22	2"
RS1HS716	One Hole Strap 2-1/2 Inch 316	0.49	2-1/2"
RS1HS816	One Hole Strap 3 Inch 316	0.56	3"
RS1HS1016	One Hole Strap 4 Inch 316	0.69	4"

## Description

Robroy Stainless Two Hole Straps are made from 316 stainless steel and are used to secure rigid or PVC-coated conduit to a wall or other types of supports.

## Standards

- cULus Listed
- UL 2239
- UL File Number: E216996

Catalog No.	Description	Weight Each (lbs.)	Trade Size
RS2HS116	Two Hole Strap 1/2 Inch 316	0.02	1/2"
RS2HS216	Two Hole Strap 3/4 Inch 316	0.03	3/4"
RS2HS316	Two Hole Strap 1 Inch 316	0.04	1"
RS2HS416	Two Hole Strap 1-1/4 Inch 316	0.06	1-1/4"
RS2HS516	Two Hole Strap 1-1/2 Inch 316	0.07	1-1/2"
RS2HS616	Two Hole Strap 2 Inch 316	0.10	2"
RS2HS716	Two Hole Strap 2-1/2 Inch 316	0.18	2-1/2"
RS2HS816	Two Hole Strap 3 Inch 316	0.21	3"
RS2HS1016	Two Hole Strap 4 Inch 316	0.27	4"

# Right Angle Clamps

# Parallel Clamps

Stainless



## Description

Robroy Stainless Right Angle Clamps are made from 316 stainless steel and are designed to secure rigid or PVC-coated conduit perpendicular to beam, channel and angle supports.

## Standards

- cULus Listed
- UL 2239
- UL File Number: E216996

Catalog No.	Description	Weight Each (lbs.)
RSRAC116	Right Angle Clamp 1/2 Inch 316	0.30
RSRAC216	Right Angle Clamp 3/4 Inch 316	0.34
RSRAC316	Right Angle Clamp 1 Inch 316	0.39
RSRAC416	Right Angle Clamp 1-1/4 Inch 316	0.44
RSRAC516	Right Angle Clamp 1-1/2 Inch 316	0.52
RSRAC616	Right Angle Clamp 2 Inch 316	0.71
RSRAC716	Right Angle Clamp 2-1/2 Inch 316	0.90
RSRAC816	Right Angle Clamp 3 Inch 316	1.04
RSRAC1016	Right Angle Clamp 4 Inch 316	1.27

## Description

Robroy Stainless Parallel Clamps are made from 316 stainless steel and are designed for use with rigid or PVC-coated conduit to run pipe or conduit parallel to the flange of I-beams or channel simply and easily without drilling holes.

## Standards

- cULus Listed
- UL 2239
- UL File Number: E216996

Catalog No.	Description	Weight Each (lbs.)
RSPAR216	Parallel Clamp 3/4 Inch 316	0.56
RSPAR316	Parallel Clamp 1 Inch 316	0.58



Stainless



## Description

Robroy Stainless Conduit Hangers are designed to be used with threaded rod, beam clamps, etc. to suspend rigid or PVC-coated conduit from I-beams, flanges, etc. All conduit hangers are made from 316 stainless steel and come with a 316 stainless steel bolt and nut.

## Standards

- cULus Listed
- UL 2239
- UL File Number: E216996

Catalog No.	Description	Weight Each (lbs.)
RSCH116	Conduit Hanger 1/2 Inch 316	0.06
RSCH216	Conduit Hanger 3/4 Inch 316	0.06
RSCH316	Conduit Hanger 1 Inch 316	0.10
RSCH416	Conduit Hanger 1-1/4 Inch 316	0.11
RSCH516	Conduit Hanger 1-1/2 Inch 316	0.16
RSCH616	Conduit Hanger 2 Inch 316	0.18
RSCH716	Conduit Hanger 2-1/2 Inch 316	0.25
RSCH816	Conduit Hanger 3 Inch 316	0.29
RSCH1016	Conduit Hanger 4 Inch 316	0.35

## Description

Robroy Stainless universal clamp back spacer is designed for use with stainless steel rigid conduit and stainless steel one and two hole mounting straps to provide additional spacing between conduit and wall or mounting surface. Quarter inch raise provides gap from surface to facilitate turning or connecting conduit. Unique design allows for use in securing 1/2" or 3/4" trade size conduit in conjunction with a one strap or 1/2", 3/4" or 1" trade size conduit with a two hole strap. Stamped 316 stainless steel material provides strong, sturdy construction and superior corrosion resistance.

## Standards

- UL Listed
- UL 2239
- CSA C22.2 No. 18.4
- UL File Number: E216996

Catalog No.	Description	Weight Each (lbs.)
RSCBS12316	Universal Clamp Back Spacer 1/2 Inch - 1 Inch 316	0.11

# Locknuts

Stainless



## Description

Robroy Stainless Locknuts are made from 316 stainless steel and are used to connect and secure threaded rigid conduit to an enclosure or outlet box.

## Standards

- cULus Listed
- UL 514B
- UL File Number: E200413

Catalog No.	Description	Weight Each (lbs.)
RSLN116	Locknut 1/2 Inch 316	0.01
RSLN216	Locknut 3/4 Inch 316	0.02
RSLN316	Locknut 1 Inch 316	0.03
RSLN416	Locknut 1-1/4 Inch 316	0.04
RSLN516	Locknut 1-1/2 Inch 316	0.05
RSLN616	Locknut 2 Inch 316	0.06

# Beam Clamps

Stainless



## Description

Robroy Stainless Beam Clamps are made from 316 stainless steel and are designed for use on I-beams, channel and other structural members and are used for hanging conduit or cables. Attachment holes are located on the back and bottom.

Catalog No.	Description	Max Beam Flange (in.)	Weight Each (lbs.)	Design Load (lbs.)
RSBC116	Beam Clamp for 1/4 Inch -20 Threaded Rod	0.75	0.25	150
RSBC216	Beam Clamp for 3/8 Inch -16 Threaded Rod	1	0.80	750
RSBC316	Beam Clamp 1/2 Inch -13 Threaded Rod	1	1.48	1100

# All Thread Rods



## Description

Robroy Stainless All Thread Rod is used as a fastening or supporting means in electrical and mechanical installations in industrial facilities – inside or outside – where corrosion is a concern. Typical uses include overhead and trapeze mounting with conduit and pipe hangers, beam clamps, strut and split ring hangers.

Catalog No.	Description	Weight Each (lbs.)
RSATR304063/8	3/8 Inch x 6 Foot 304 ATR Hanger Rod	1.875
RSATR304123/8	3/8 Inch x 12 Foot 304 ATR Hanger Rod	3.75
RSATR304061/2	1/2 Inch x 6 Foot 304 ATR Hanger Rod	3.36
RSATR304121/2	1/2 Inch x 12 Foot 304 ATR Hanger Rod	6.72

# Back to Back Slotted

# Slotted Struts

Stainless



## Description

Robroy Stainless Back to Back Slotted Strut is available in 304 or 316 stainless steel and provides framework and support for conduit systems. The slotted hole design allows for fastening at various points.

Catalog No.	Description	Weight Each (lbs.)
RSA-1201PLH-304X10	Back To Back Slotted Strut 1-5/8 Inch 304	38.00
RSA-1201PLH-316X10	Back To Back Slotted Strut 1-5/8 Inch 316	38.00

## Description

Robroy Stainless Slotted Strut is available in 304 or 316 stainless steel and provides framework and support for conduit systems. The slotted hole design allows for fastening at various points.

Catalog No.	Description	Weight Each (lbs.)
RSA-4PLH-304X10	Slotted Strut 7/8 Inch 304	10.00
RSA-1PLH-304X10	Slotted Strut 1-5/8 Inch 304	19.00
RSA-4PLH-316X10	Slotted Strut 7/8 Inch 316	10.00
RSA-1PLH-316X10	Slotted Strut 1-5/8 Inch 316	19.00

# Rigid Strut Straps

# Strut Nut with Springs

Stainless



## Description

Robroy Stainless Rigid Strut Straps are designed to be used with strut in order to secure a conduit run. Robroy Stainless Rigid Strut Straps are available in 316 stainless steel.

Catalog No.	Description	Weight Each (lbs.)
RSP-1050-316	Rigid Strut Straps 1/2 Inch 316	1.05
RSP-1075-316	Rigid Strut Straps 3/4 Inch 316	1.45
RSP-1100-316	Rigid Strut Straps 1 Inch 316	1.65
RSP-1125-316	Rigid Strut Straps 1-1/4 Inch 316	1.90
RSP-1150-316	Rigid Strut Straps 1-1/2 Inch 316	3.00
RSP-1200-316	Rigid Strut Straps 2 Inch 316	3.30
RSP-1250-316	Rigid Strut Straps 2-1/2 Inch 316	3.90
RSP-1300-316	Rigid Strut Straps 3 Inch 316	4.40
RSP-1400-316	Rigid Strut Straps 4 Inch 316	6.20

## Description

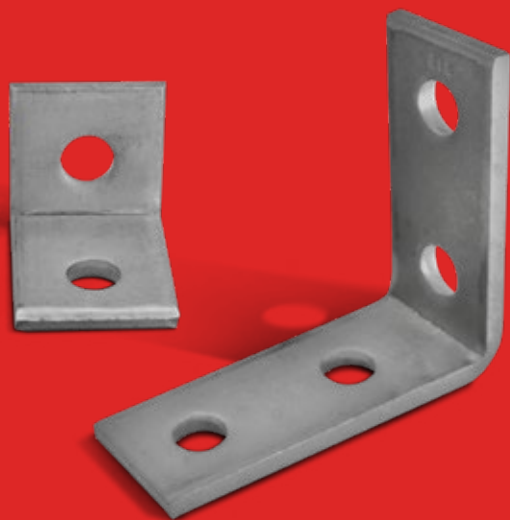
Robroy Stainless Strut Nuts with Spring help secure components in a strut system and are available in 316 stainless steel.

Catalog No.	Description	Weight Each (lbs.)
RSSN-1025-316	1/4 Inch Strut Nut with Spring 316	0.10
RSSN-1037-316	3/8 Inch Strut Nut with Spring 316	0.10
RSSN-1050-316	1/2 Inch Strut Nut with Spring 316	0.10

# Brackets

# Flat Angles

Stainless



## Description

Robroy Stainless Brackets are used to connect stainless steel strut. They are constructed of 316 stainless steel and hole size is 9/16".

Catalog No.	Description	Weight Each (lbs.)
RSF-2202-316	2 Hole Bracket 316	0.40
RSF-2407-316	4 Hole Angle Bracket 316	0.84

## Description

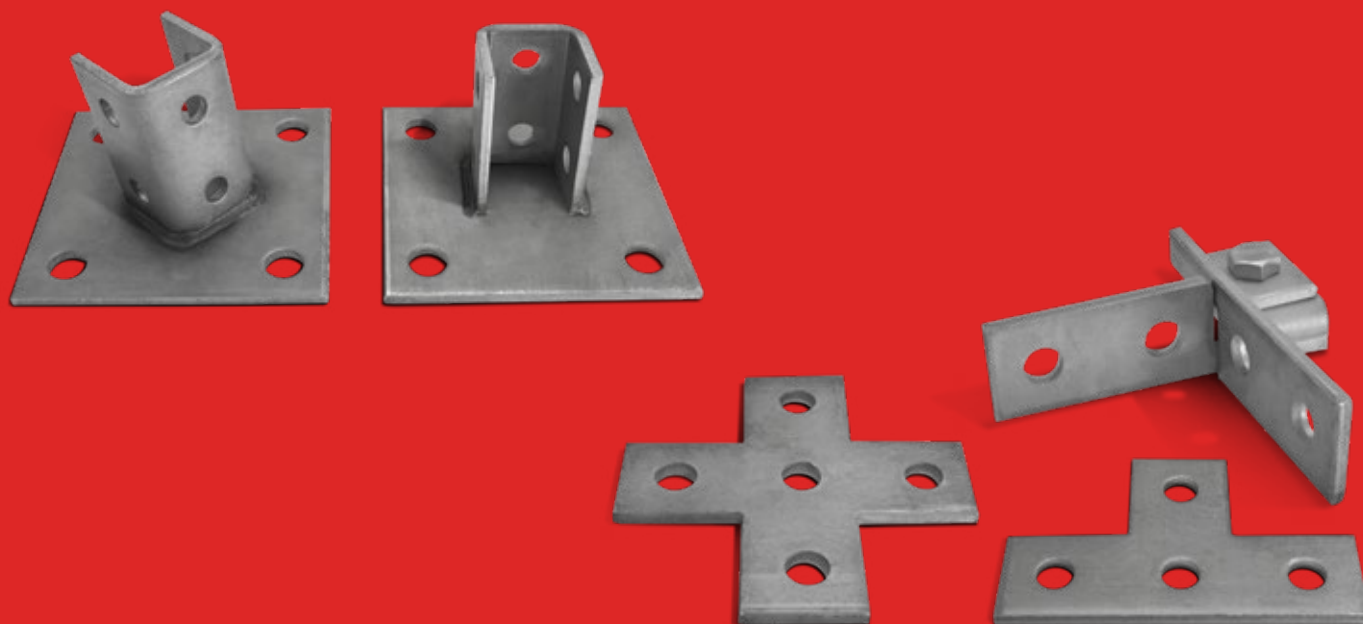
Robroy Stainless Flat Plates are used to connect sections of channel strut together in vertical or horizontal sections forming a splice joint. Robroy Stainless Flat Plates are 316 stainless steel and hole size is 9/16".

Catalog No.	Description	Weight Each (lbs.)
RSF-1301-316	3 Hole Flat Angle Plate 316	0.58
RSF-1406-A-316	4 Hole Flat Angle Plate 316	0.80

# Base Plates

# Flat Plates

Stainless



## Description

Robroy Stainless Base Plates are designed to be floor mounted to support upright strut installations. They are available in 316 stainless steel and hole size is 9/16".

Catalog No.	Description	Weight Each (lbs.)
RSF-9601-316	Channel Base Plate 316	3.27
RSF-9601-SQ-316	Square Channel Base Plate 316	3.27

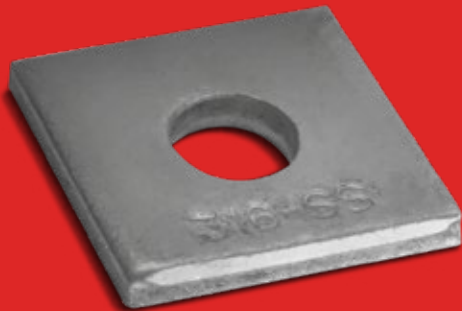
## Description

Robroy Stainless Flat Plates are 316 stainless steel and are used to connect sections of channel strut together in vertical or horizontal sections forming a splice joint. Robroy Stainless Flat Plates are 316 stainless steel and hole size is 9/16".

Catalog No.	Description	Weight Each (lbs.)
RSF-1401-316	4 Hole T Plate 316	0.83
RSF-1402-316	4 Hole Splice Plate 316	0.77
RSF-1501-316	5 Hole Cross Plate 316	1.05

# Flat Square Washers

Stainless



## Description

Robroy Stainless Flat Square Washers are 316 stainless steel and are designed for use with strut in order to make connections within the system or act as a spacer, shim or seat for various hardware components.

Catalog No.	Description	Weight Each (lbs.)
RSF-1101-1/2-316	Flat Square Washer 1/2 Inch 316	0.19

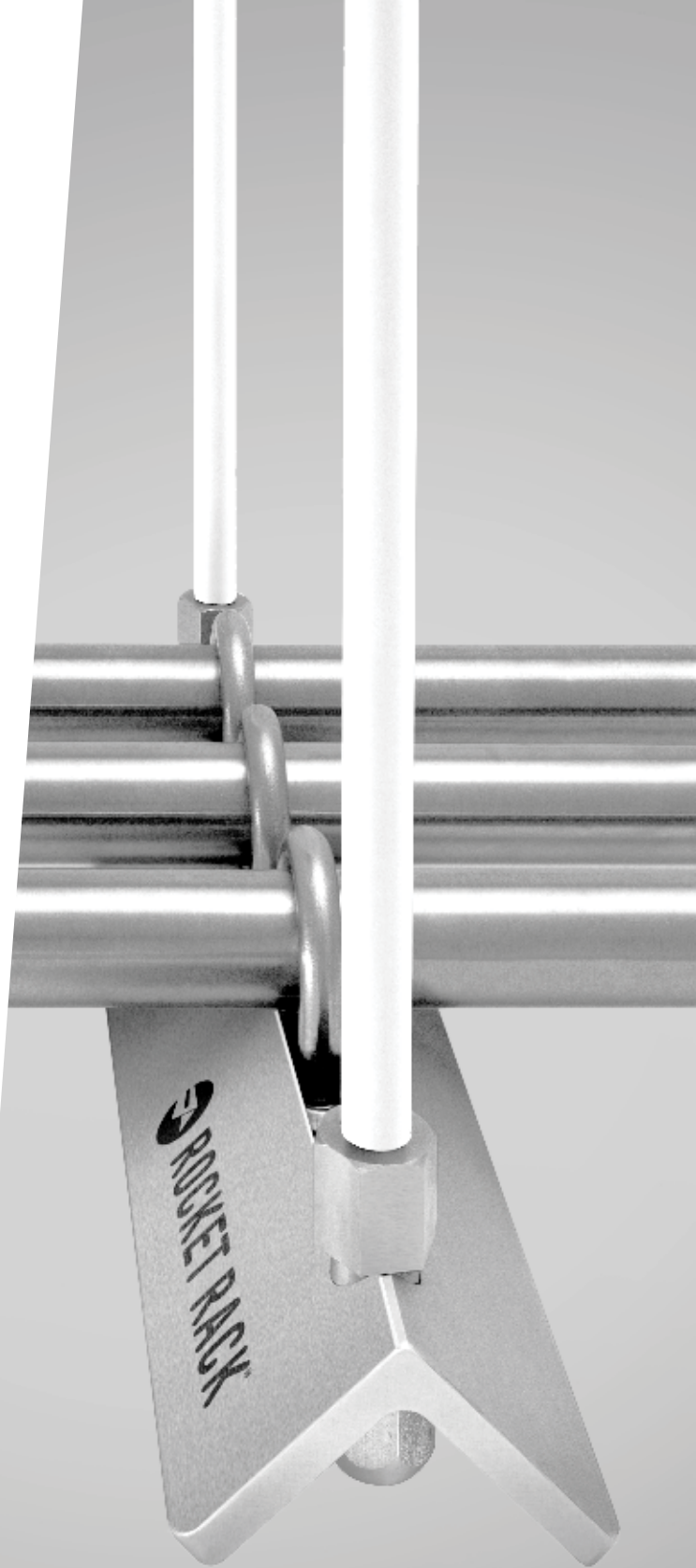




# Faster Cleaner Safer<sup>TM</sup>

Pre-Engineered & Factory Fabricated Metal  
Framing & Support Platform for Electrical,  
Mechanical & Process Installations

[rocket-rack.com](http://rocket-rack.com)





ROCKET RACK® is a pre-engineered, factory fabricated sanitary support system for process pipe, electrical conduit, and other mechanical installations. It is specially designed for use in FDA or USDA regulated facilities such as Food & Beverage and Pharmaceutical plants - any project where sanitary installation is required. Support racks are engineered to withstand heavy loads and the patented slot design allows for lines to be added quickly and easily without cutting or welding. The slot also permits fine adjustments, assuring a perfectly straight pipe or conduit run. Sleek lines, radius corners and a buffed finish create an aesthetically pleasing installation while meeting the sanitary requirements of the most stringent applications.



# ROCKET RACK®

A **ROBROY** Brand





**ROBROY  
STAINLESS.**

A ROBROY Brand

## **Robroy Industries Raceway Division**

1100 US Highway 271 South

Gilmer, Texas 75644

**Telephone:** (903) 843-5591

**Email:** [csr@robroy.com](mailto:csr@robroy.com)

Please visit **[RobroyStainless.com](https://RobroyStainless.com)** for additional product offerings.

©2024 Robroy Industries Raceway Division

Document Number: 004

Revision Date: 1/23/24